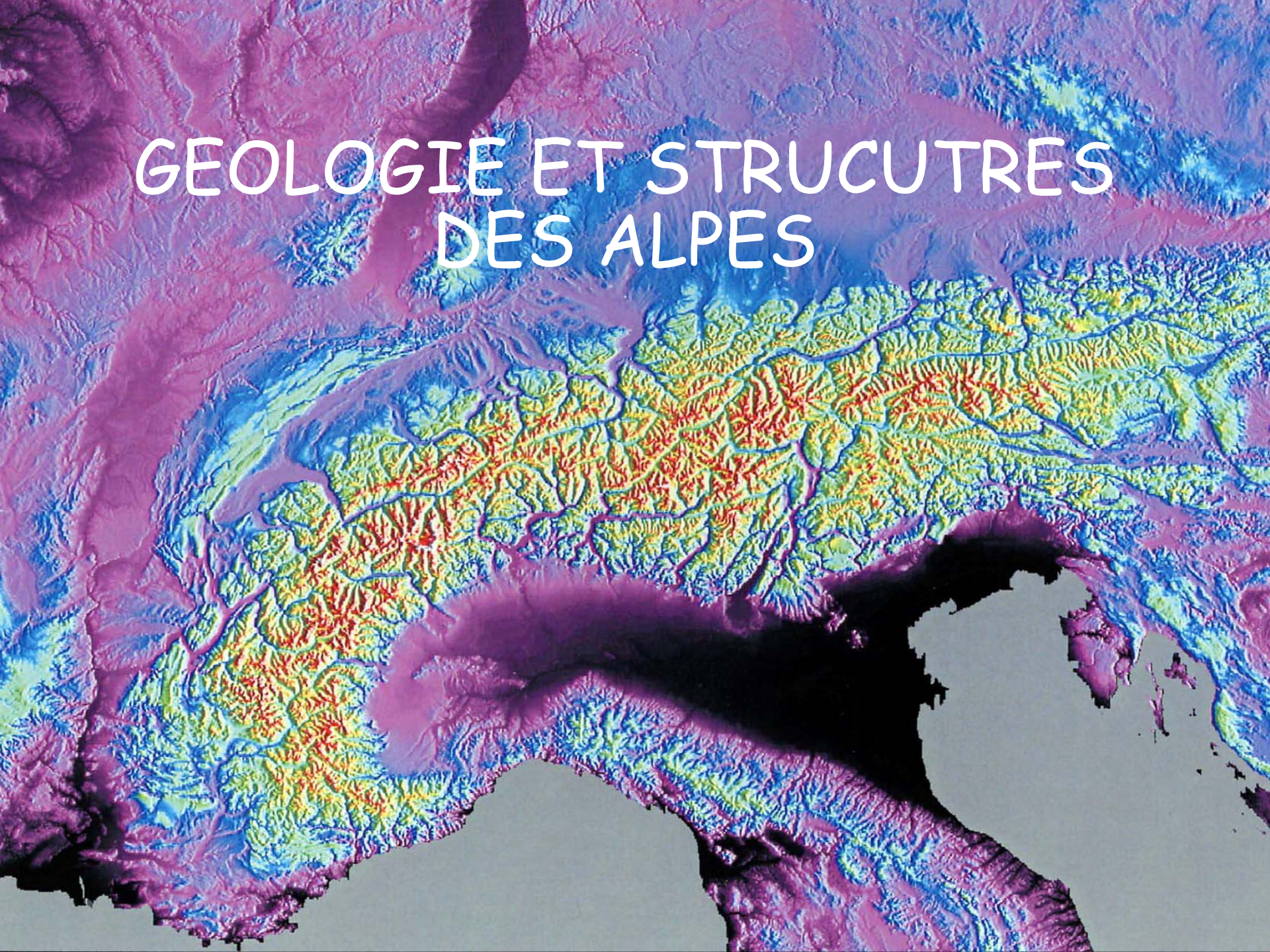
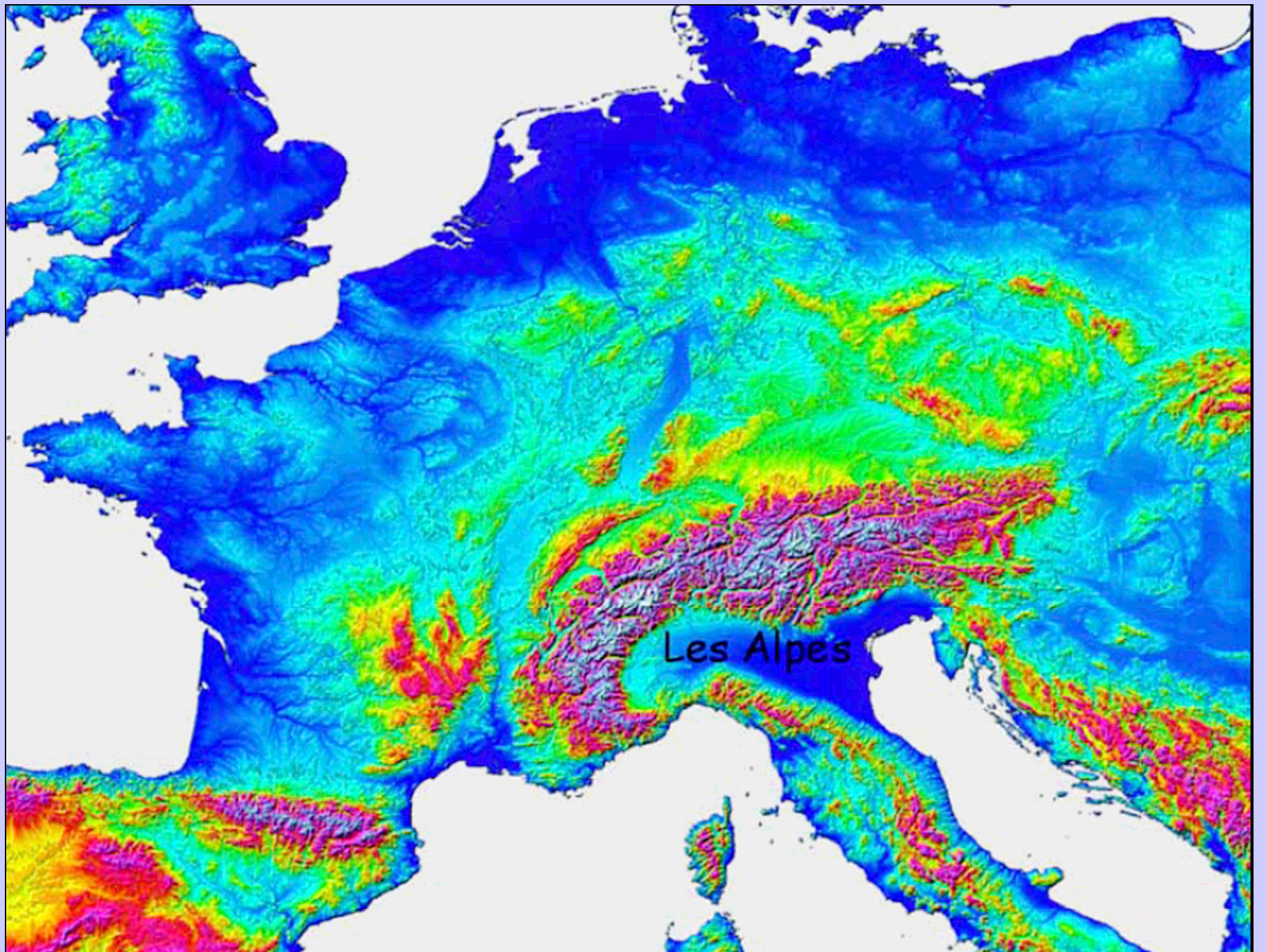


GEOLOGIE ET STRUCTURES DES ALPES





Les Alpes

Traversée des Alpes Occidentales par la vallée de l'Arve



Photo: P. Stoop

W

Cascade de l'Arpenaz

E

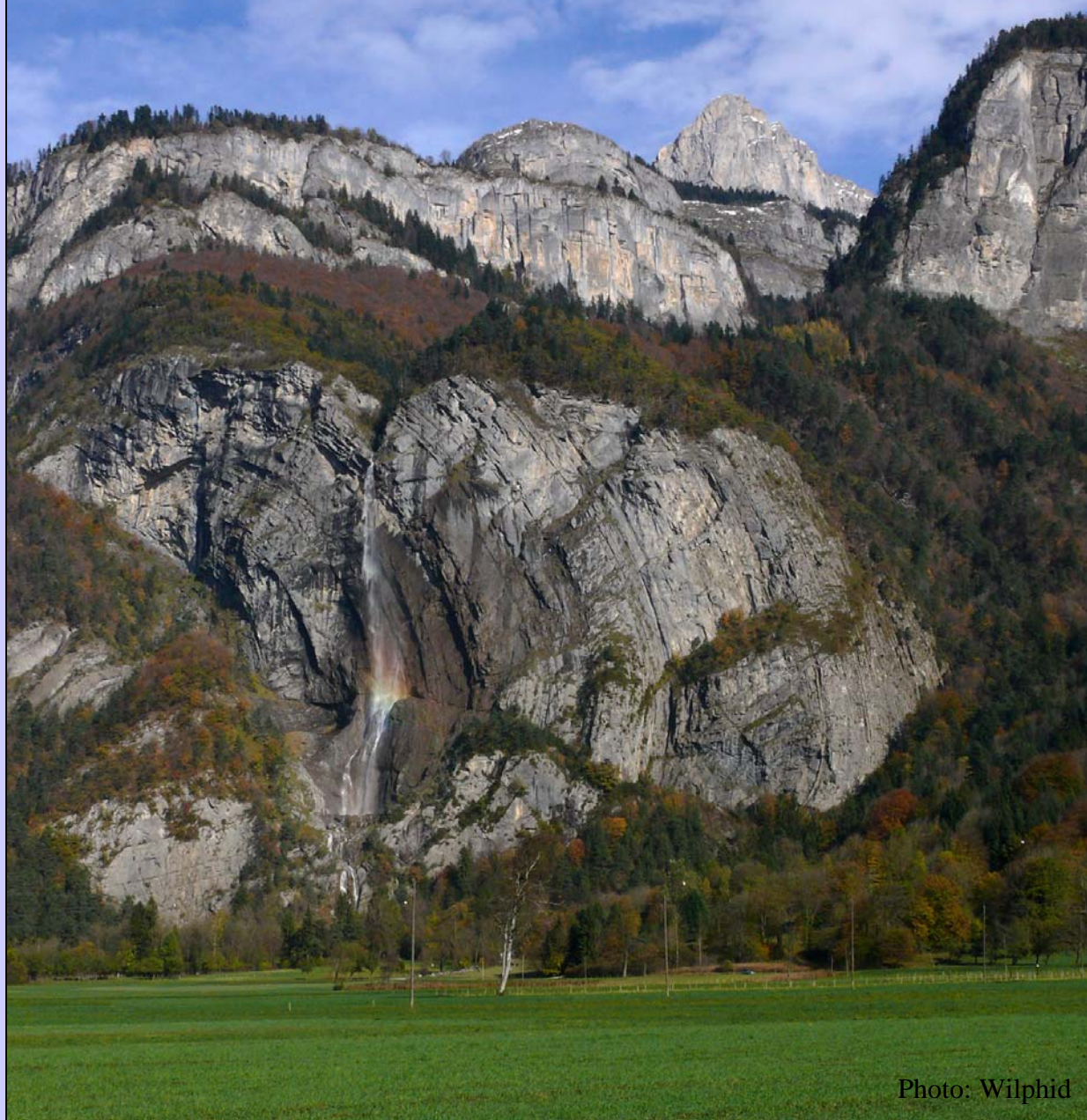
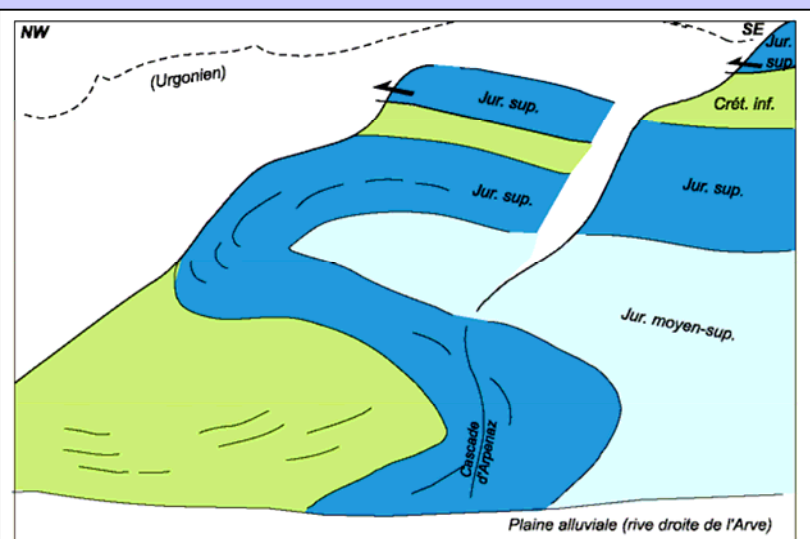


Photo: Wilphid



W

Synclinal de Platé

E



Massif du Mt Blanc

NE

SW



Aiguilles de Chamonix



Photo: P-A. Delsart



Photo: J-P. Bouillin



Photo: J. Vidal

Massifs du Mt Blanc et des Aiguilles Rouges

E

W

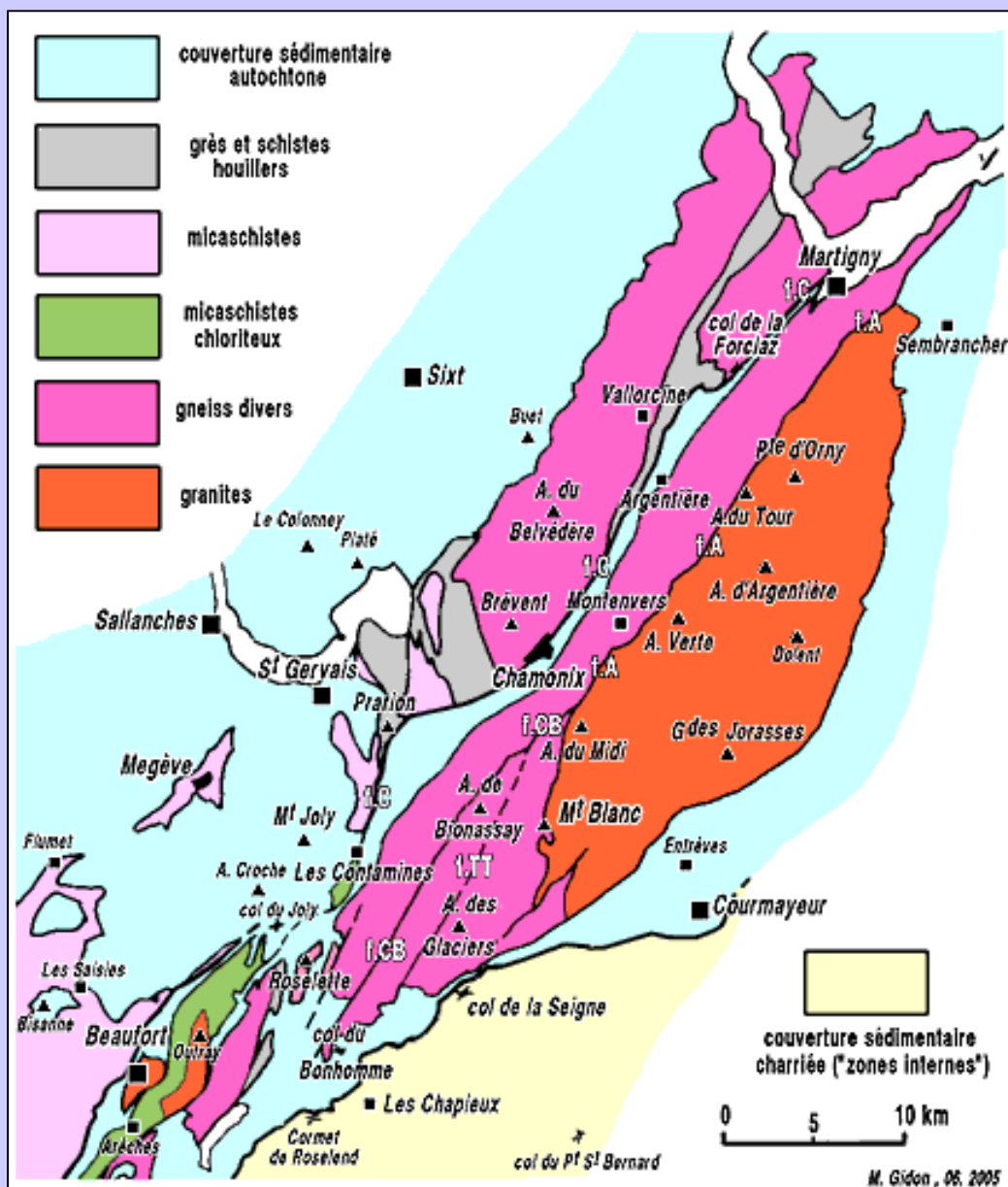


Photo: J. Rimpilainen

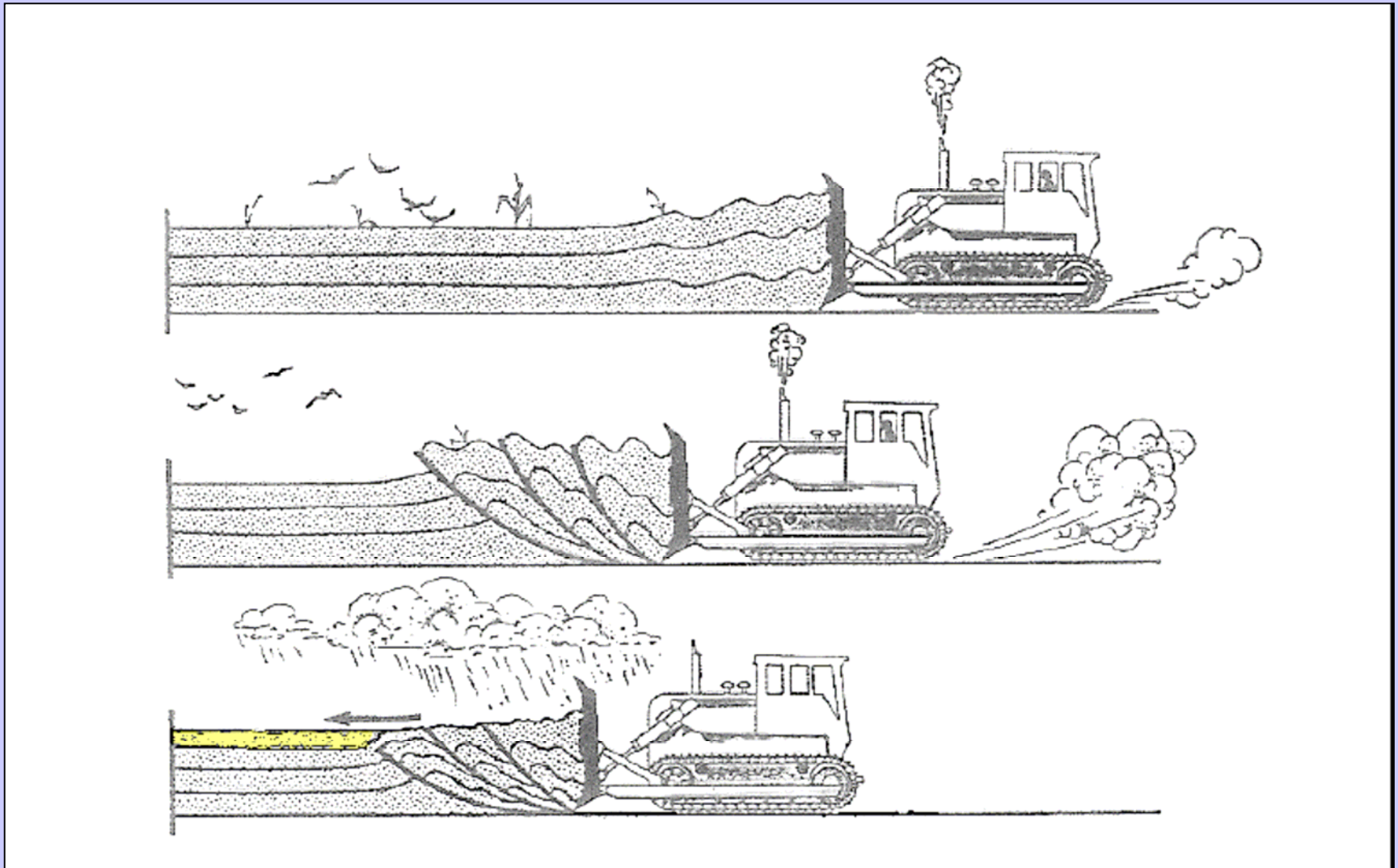
Massif du Mt Blanc et vallée de Chamonix



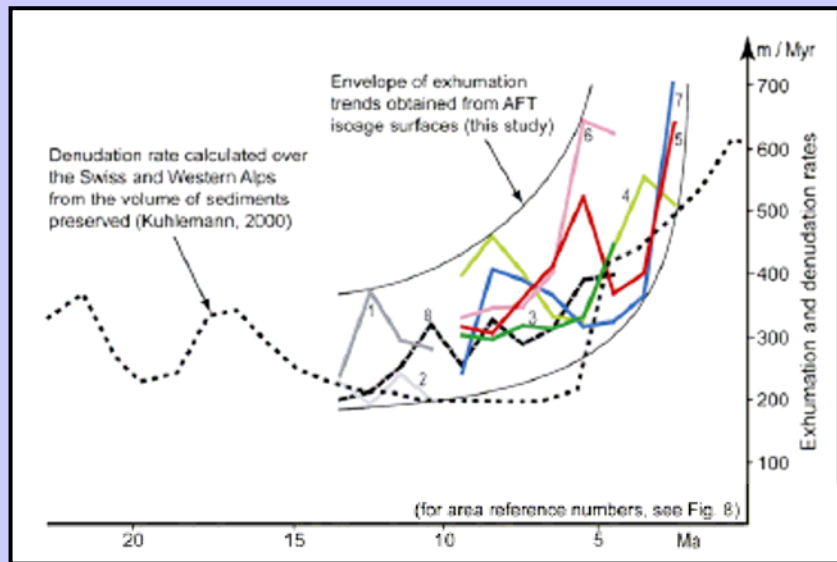
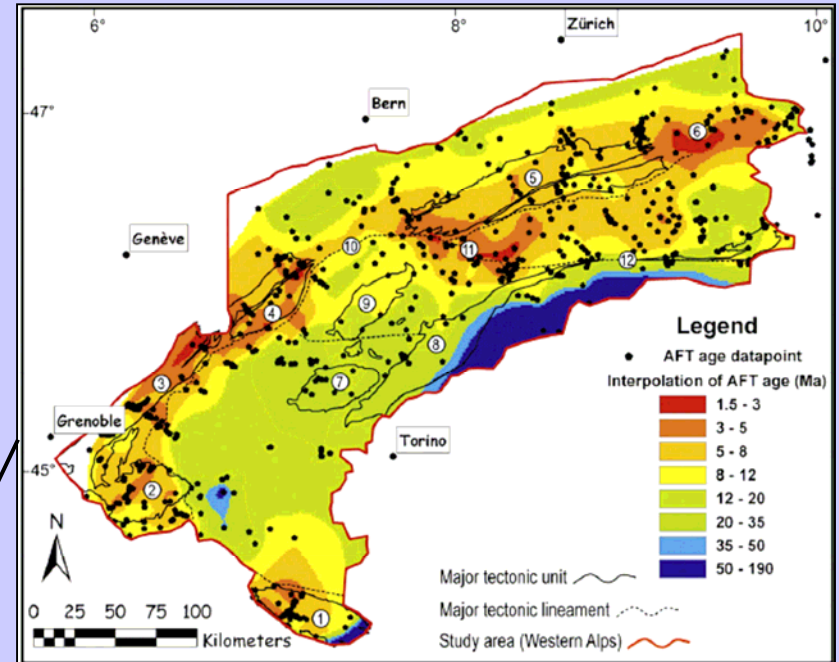
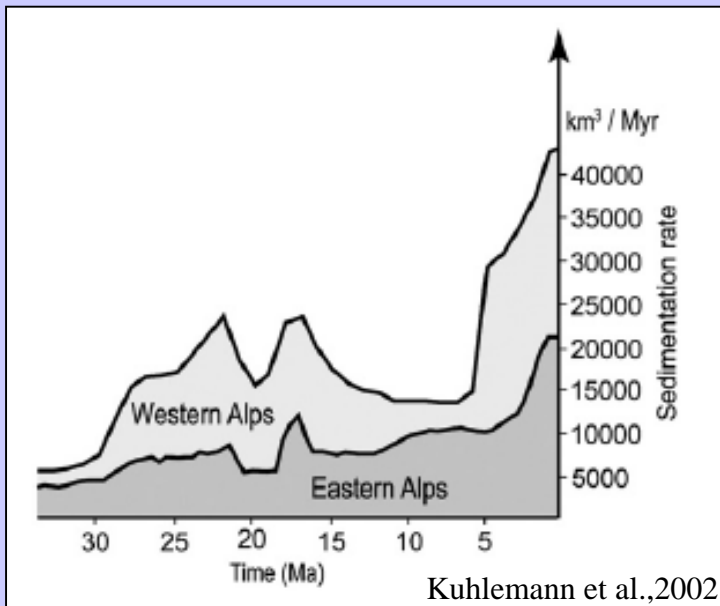
Carte géologique régionale simplifiée



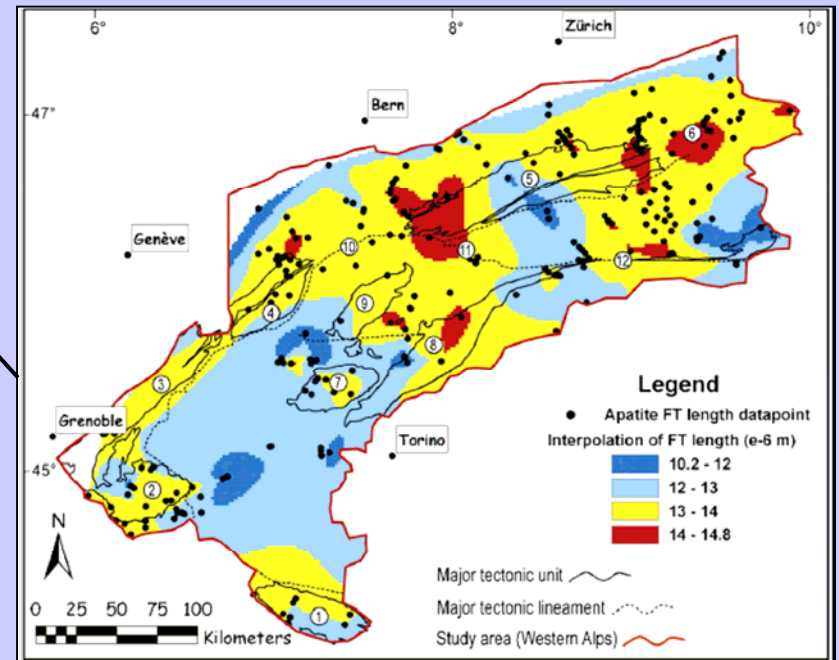
Déformation de la couverture mésozoïque



Exhumation du Massif du Mt Blanc et des autres massifs cristallins externes



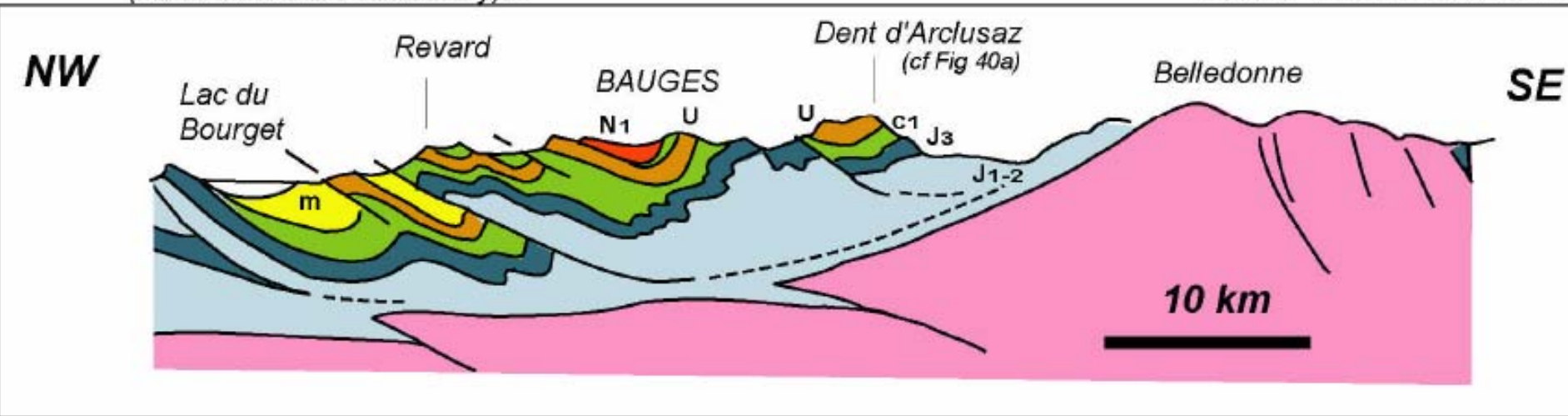
Vernon et al., 2007



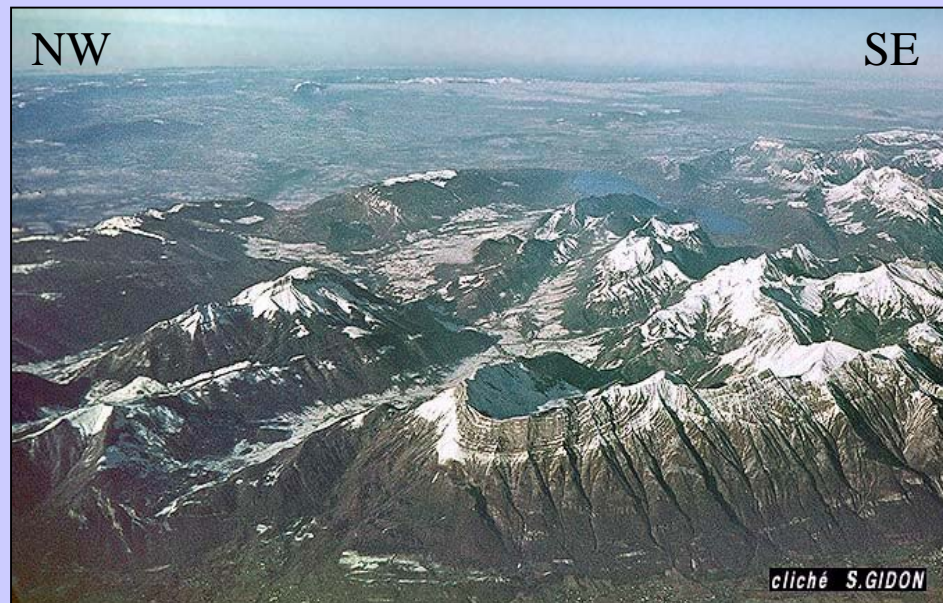
Les massifs subalpins: les Bauges

(carte 1/50.000 : Chambéry)...

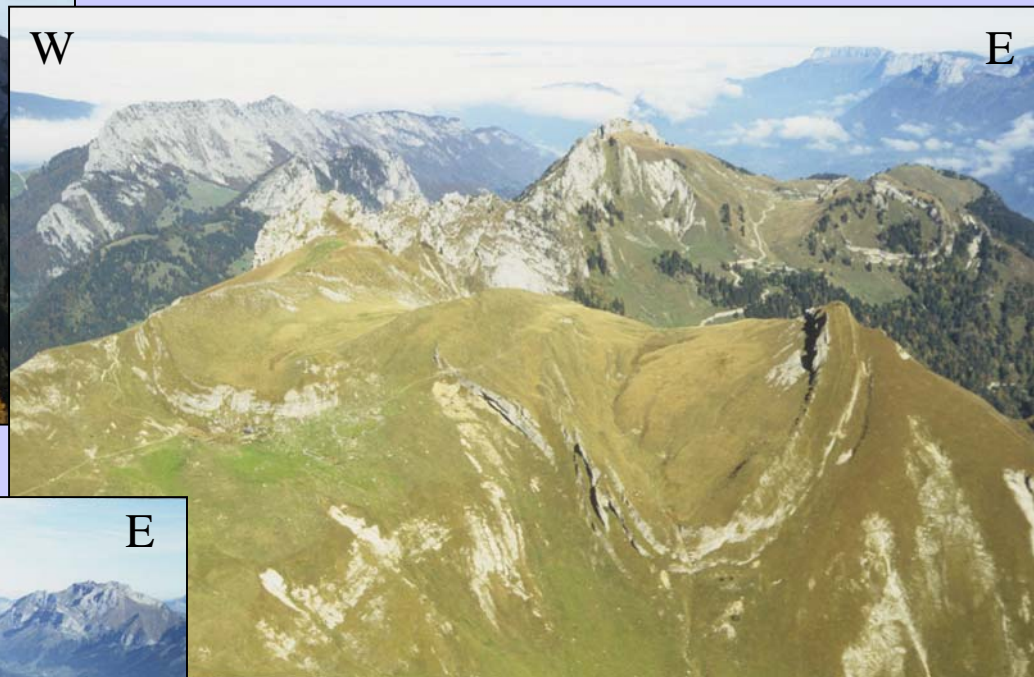
...(carte 1/50.000 : Albertville)



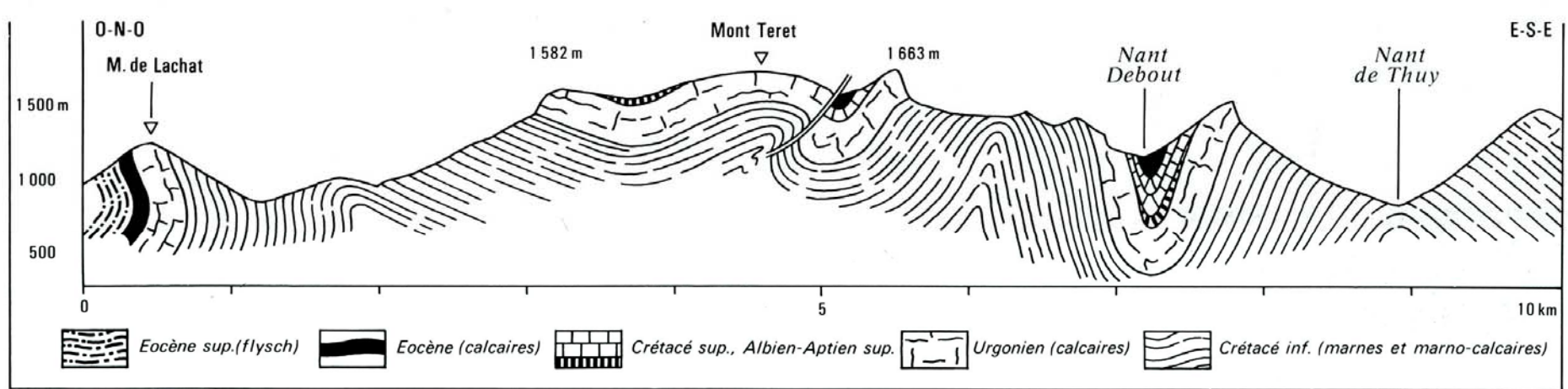
D'après Debelmas et Mascle, 1993



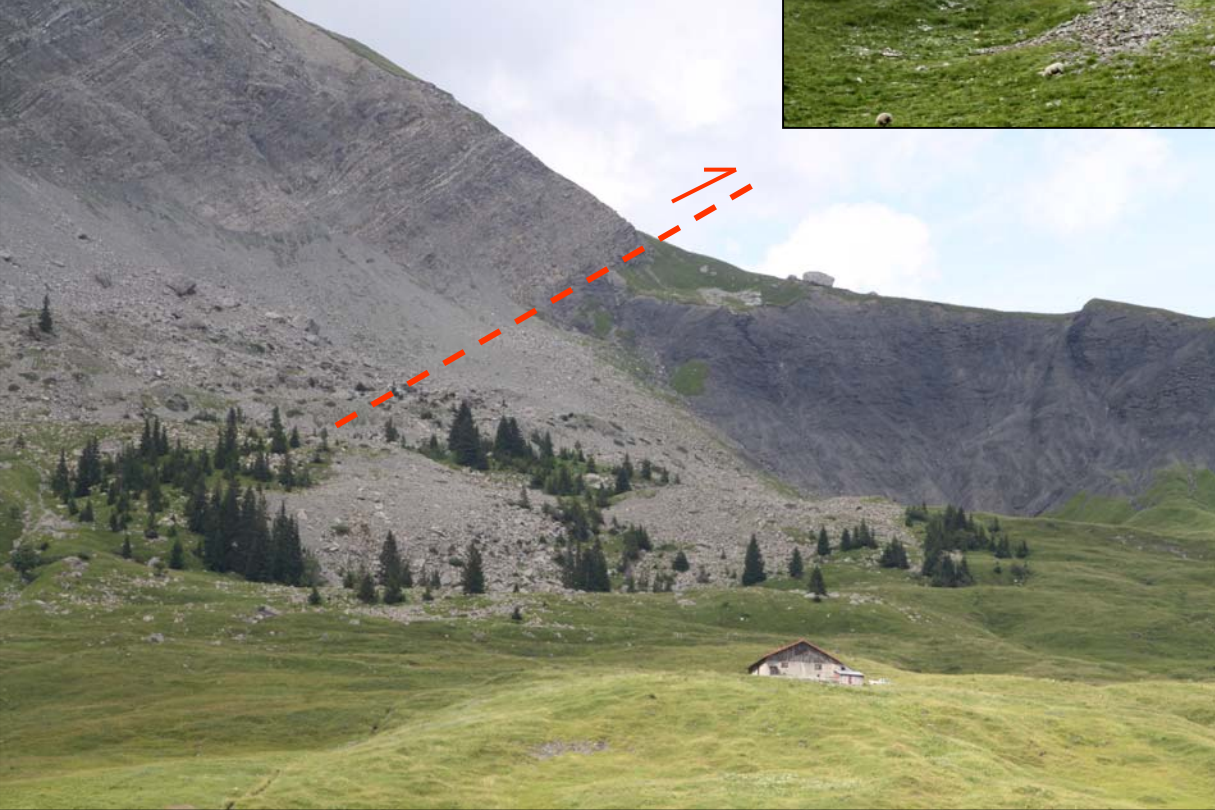
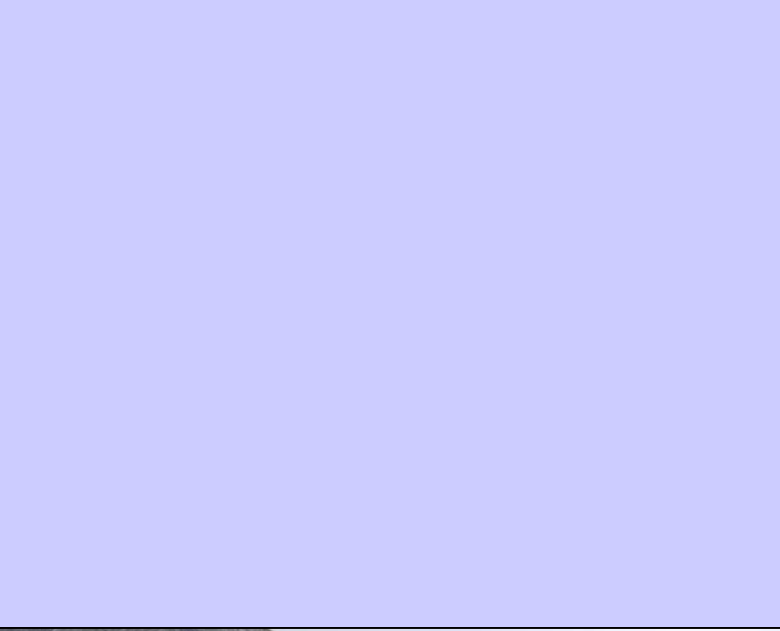




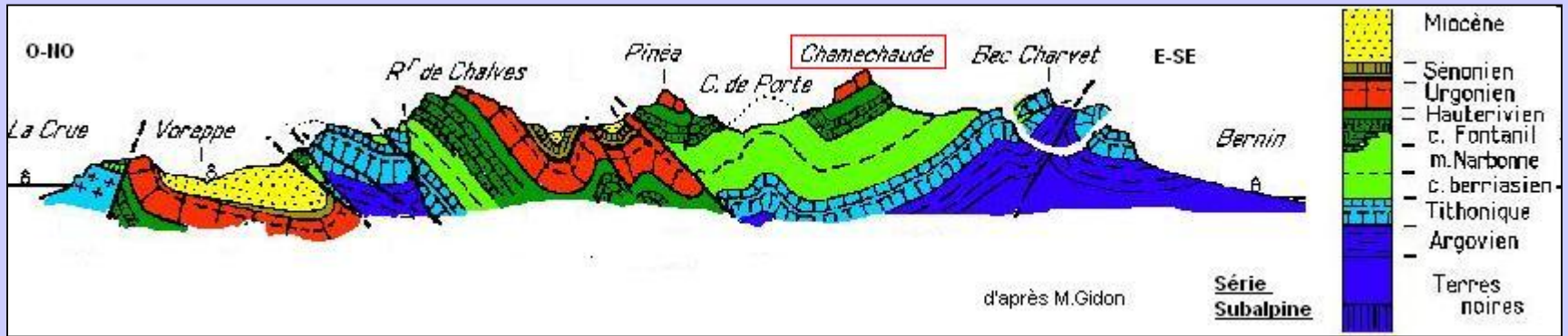
Les massifs subalpins: les Bornes



Cliché B. Labesse



Les massifs subalpins: la Chartreuse





cliché M.GIDON

Les massifs subalpins: le Jura méridional

