

Dépôts gravitaires



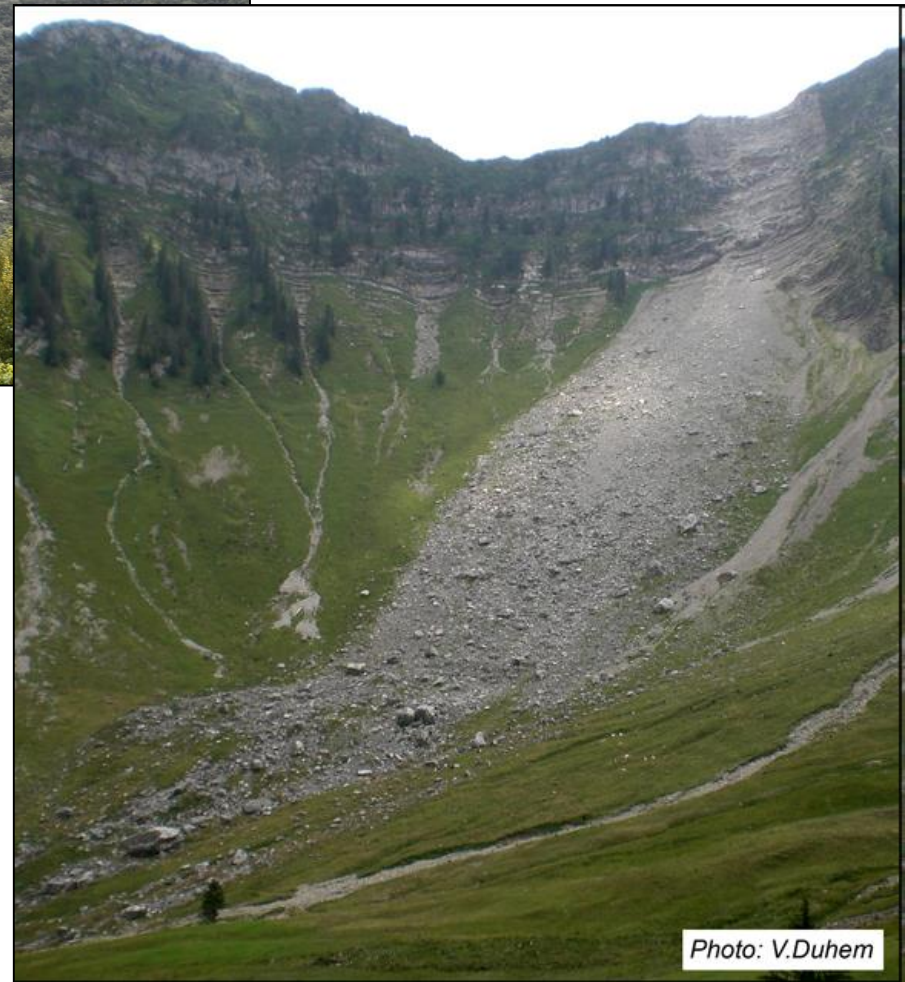


Photo : S. Morard

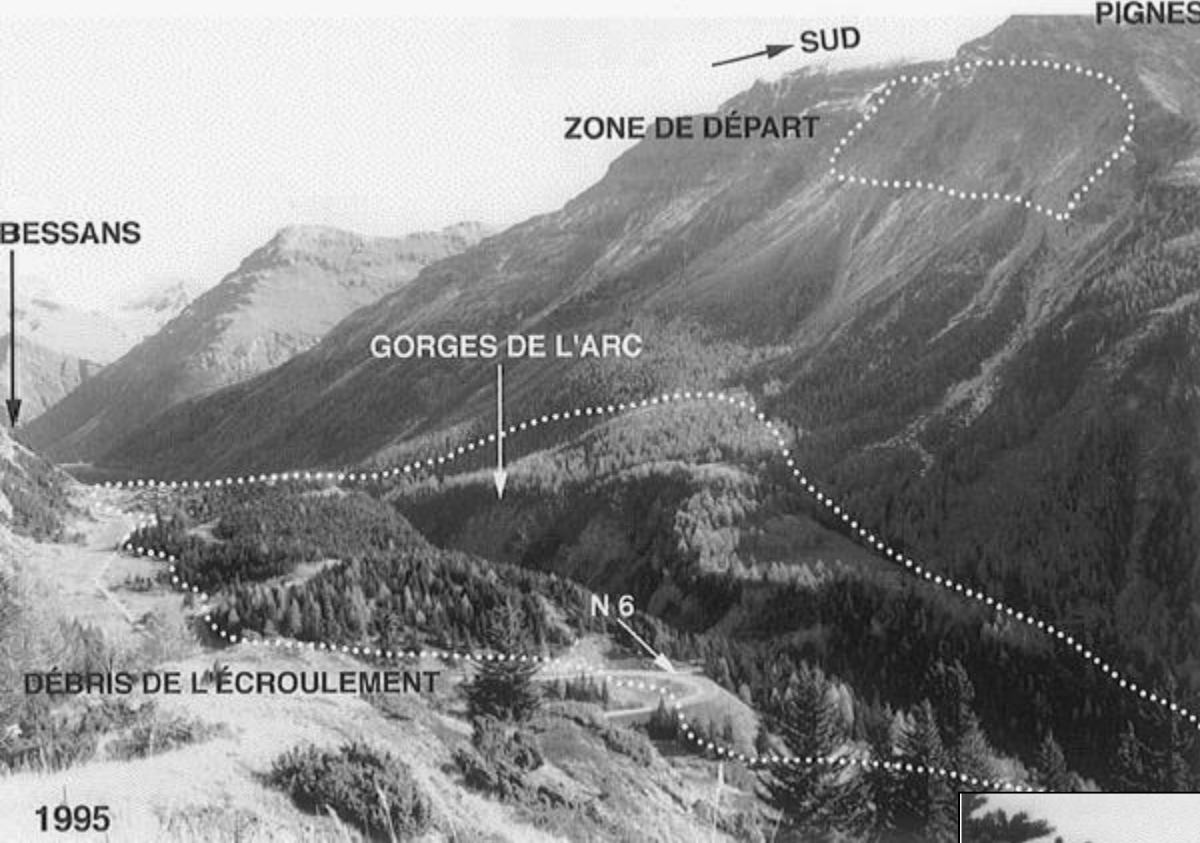






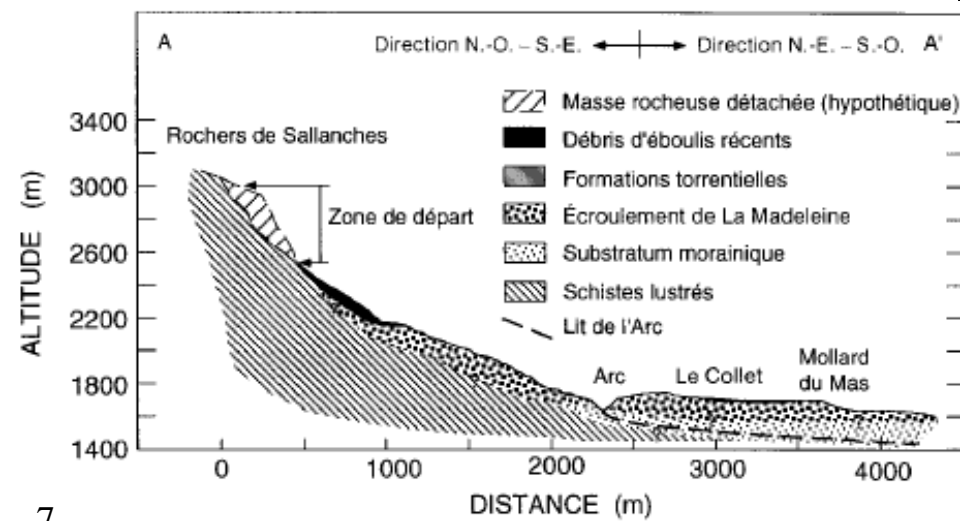




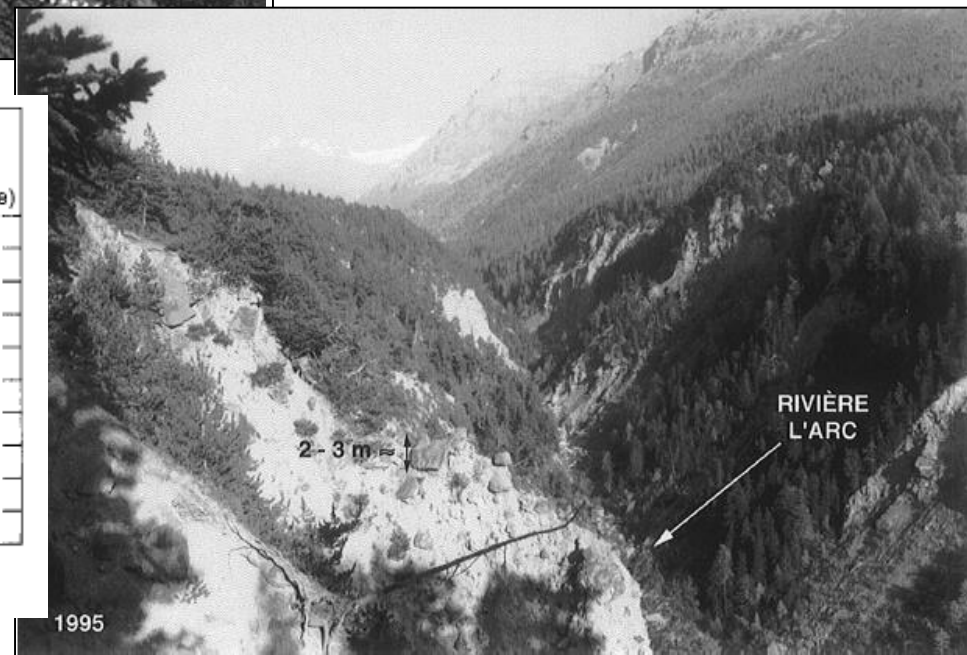


Couture et al., 1997

1995



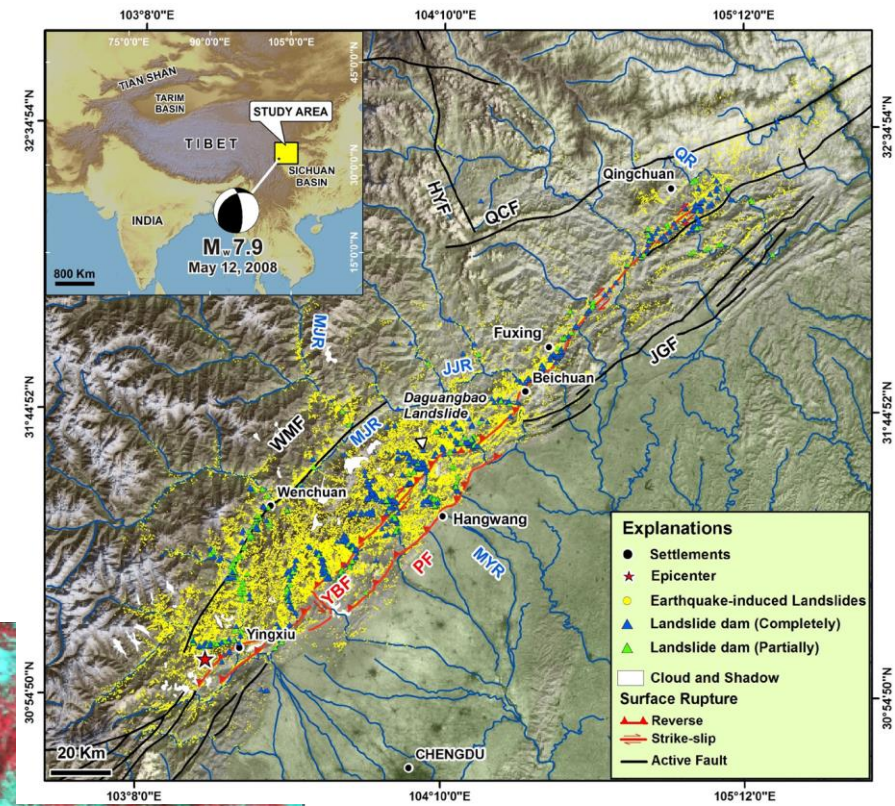
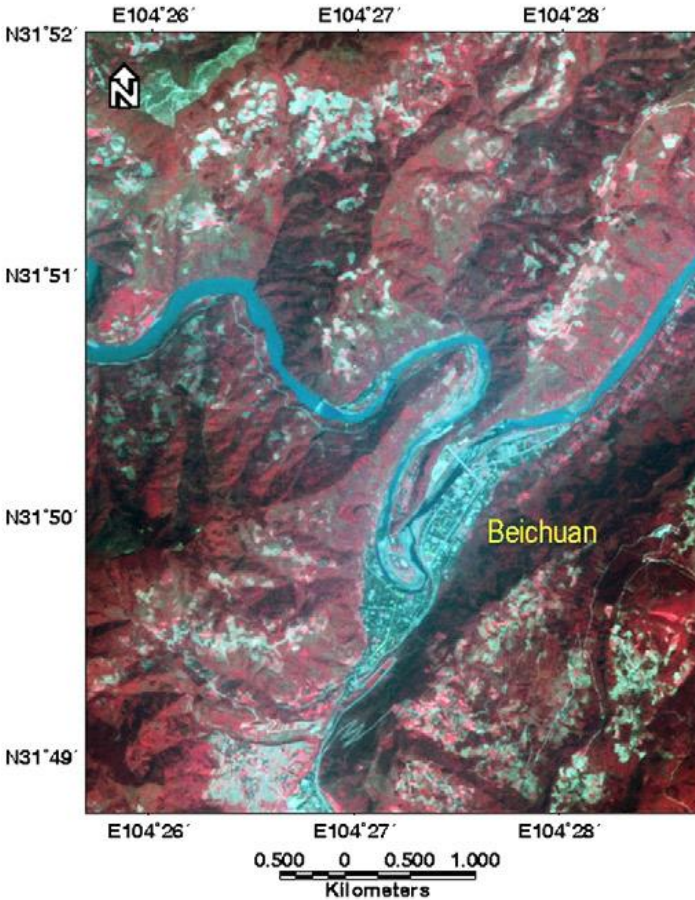
7



1995

Tremblement de terre de 2008 dans le Sichuan, Chine

AVANT



Fan et al., 2013

APRES



2006 7 31

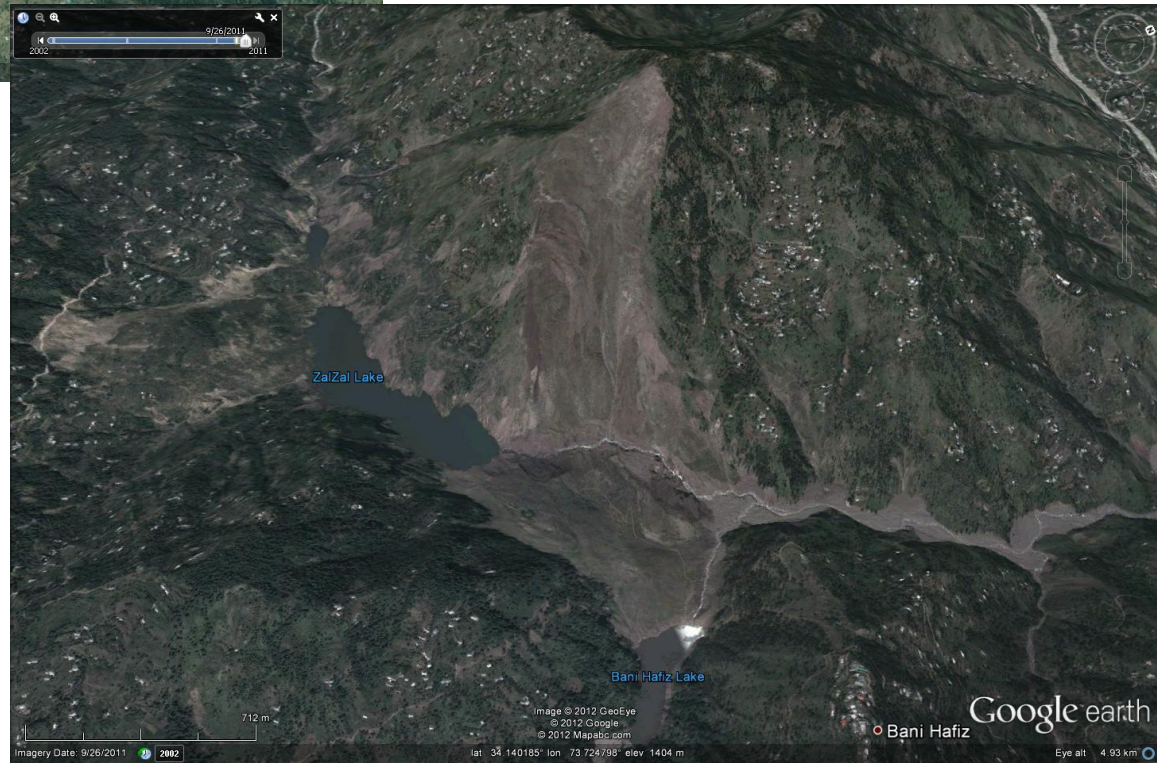
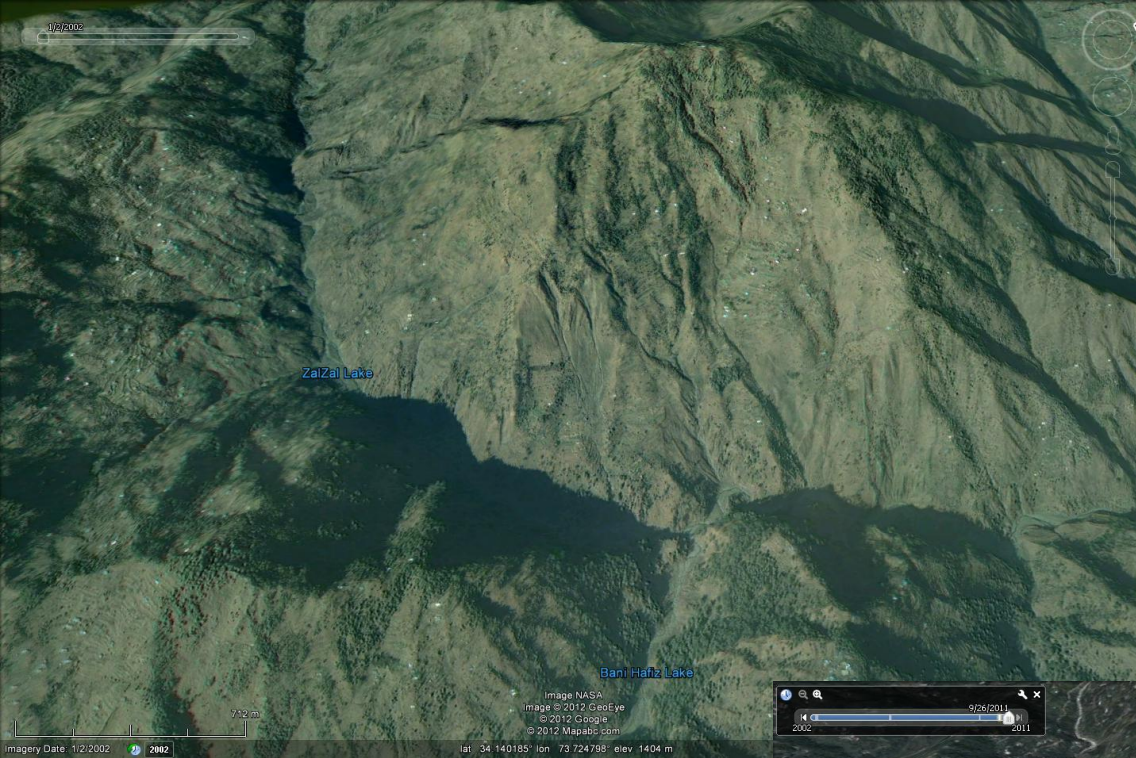




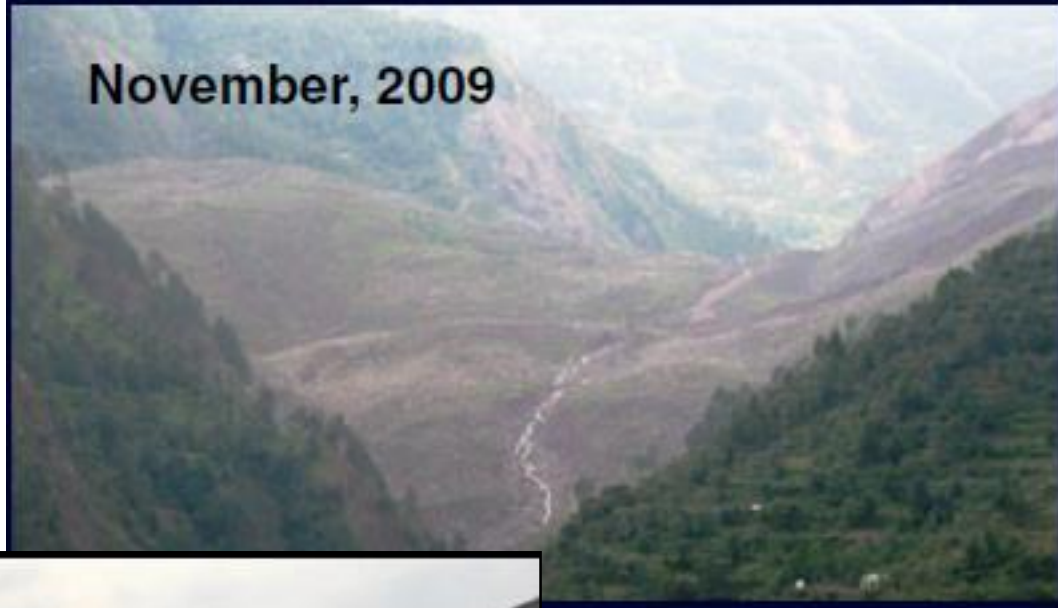
D. Morin



Tremblement de terre de 2005 au Pakistan

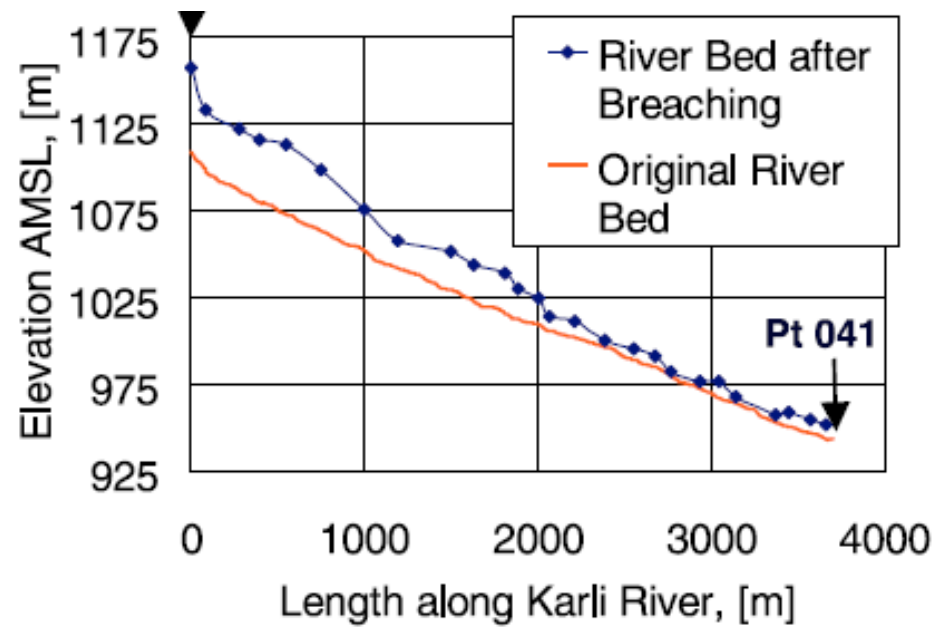
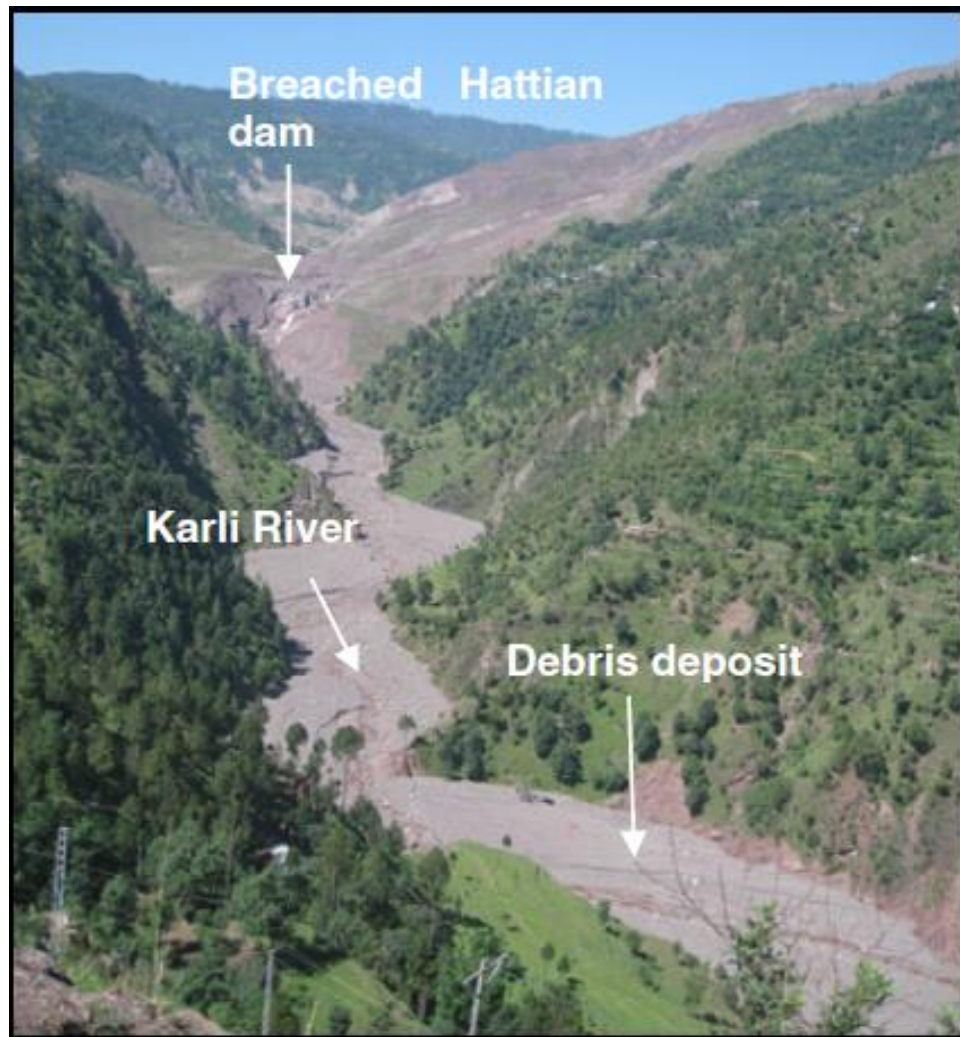


November, 2009



April, 2010

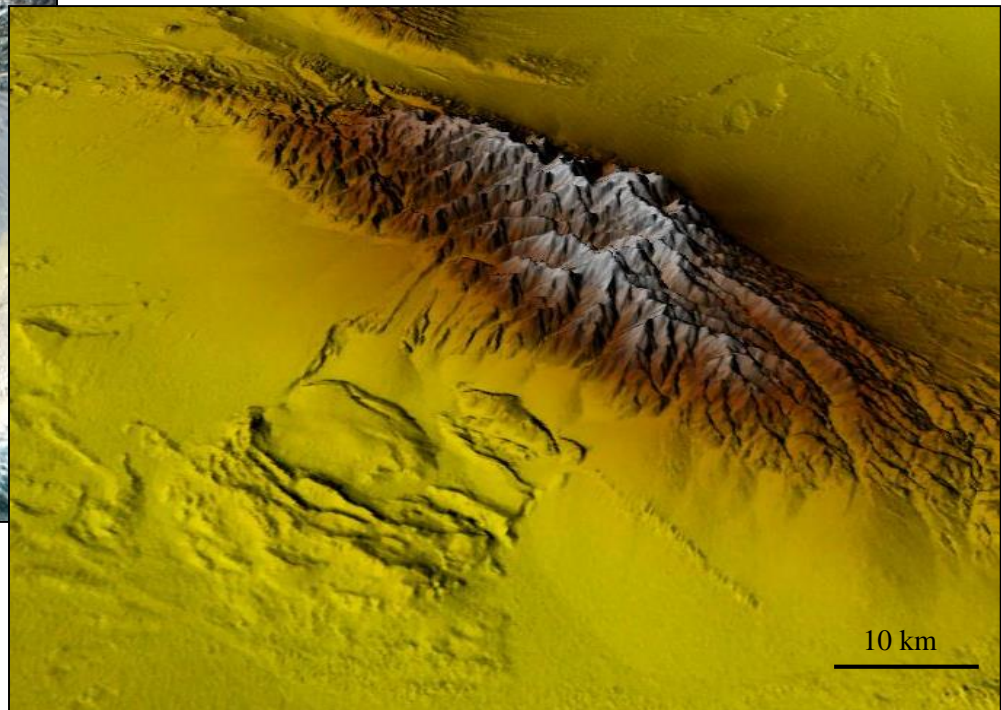
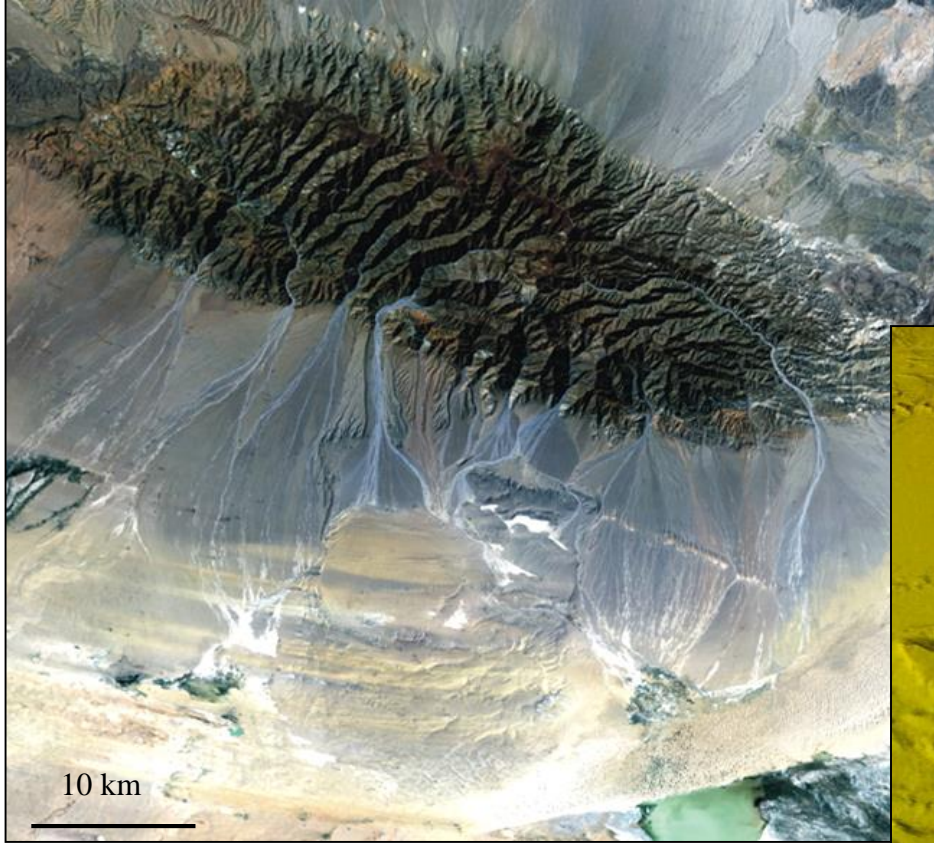




Konagai and Sattar, 2012





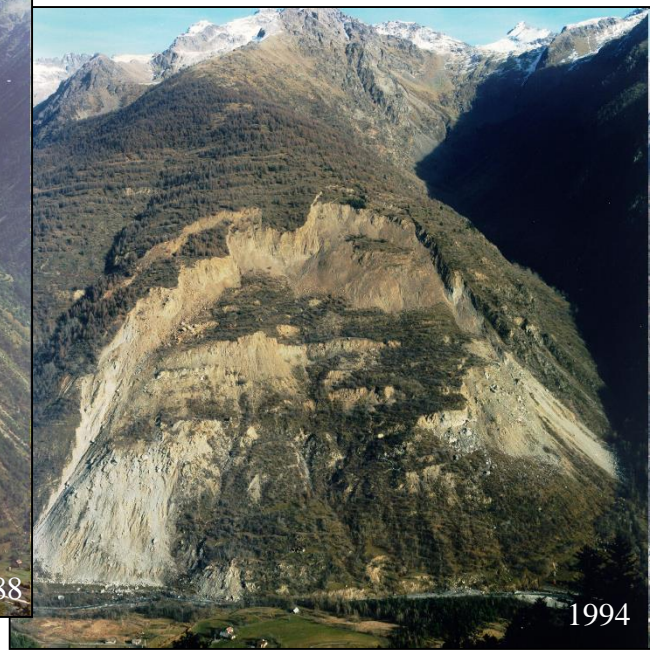




1976



1988



1994



2006

Geoazur



M-J. Rodriguez-Peces





WLF2



WLF2

WLF2





Déformations dans les formations quaternaires





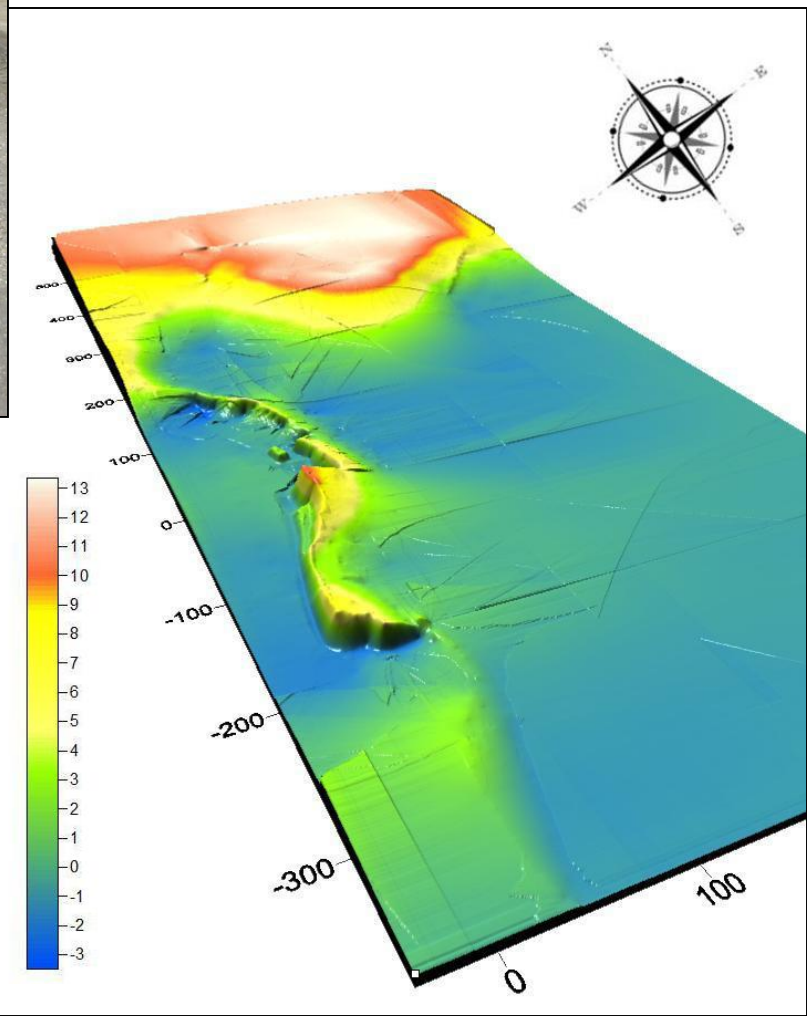


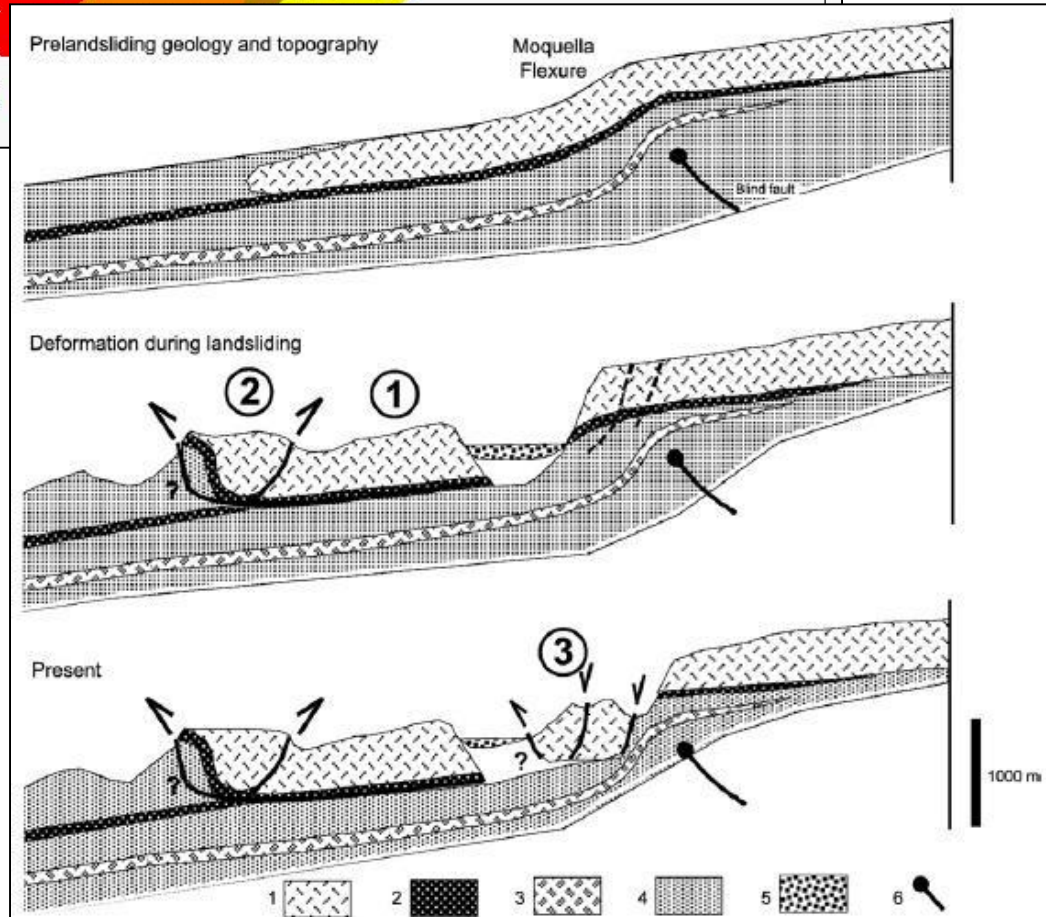
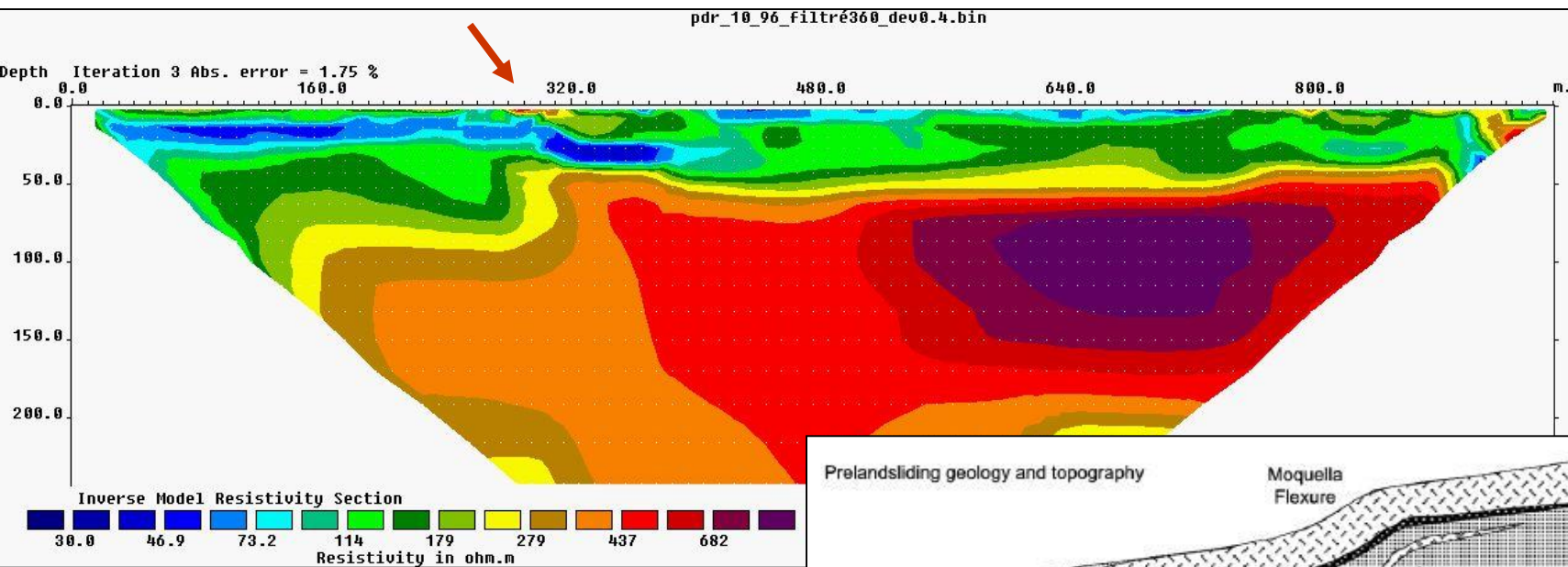




Burke et al., 2009

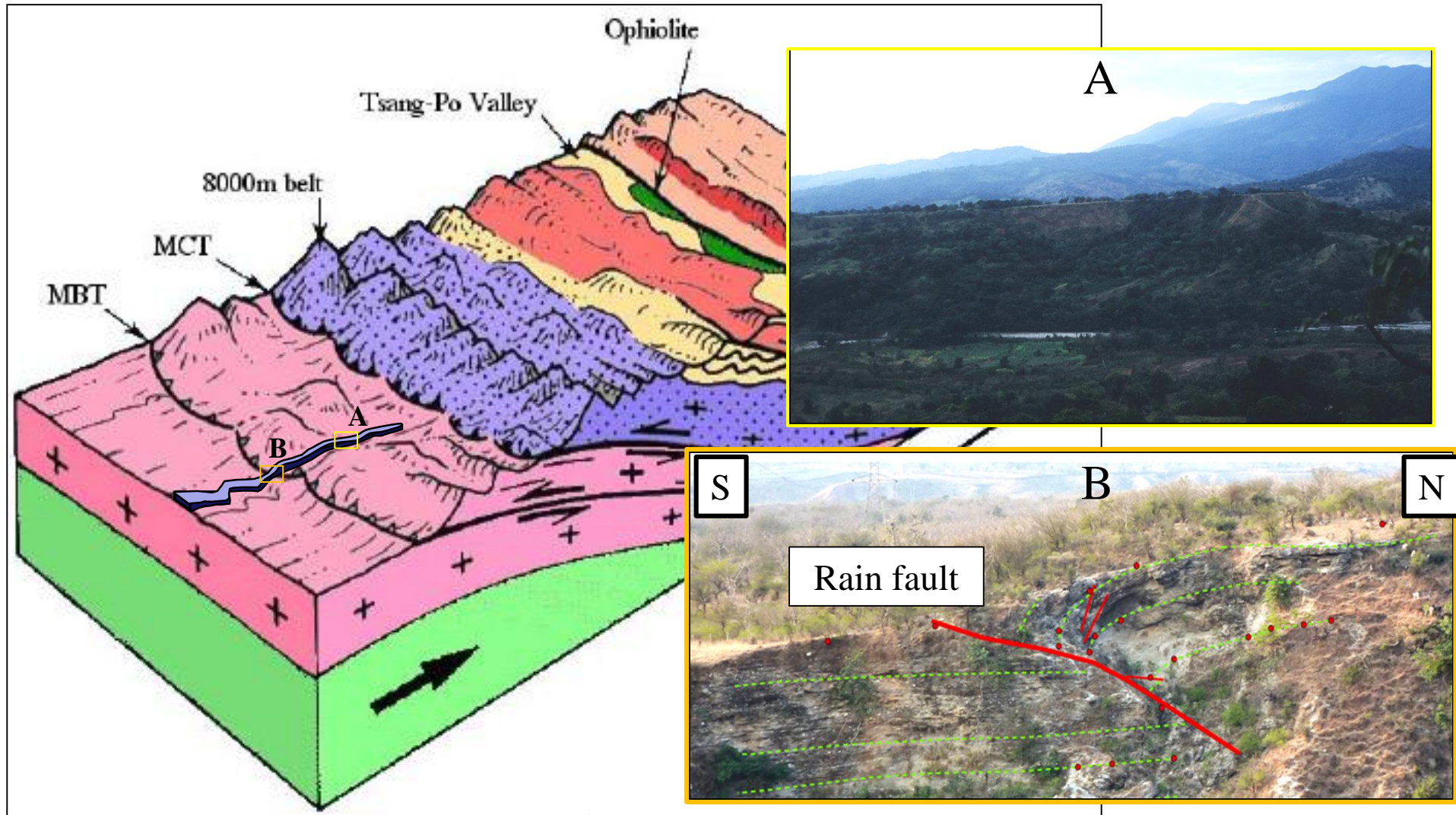






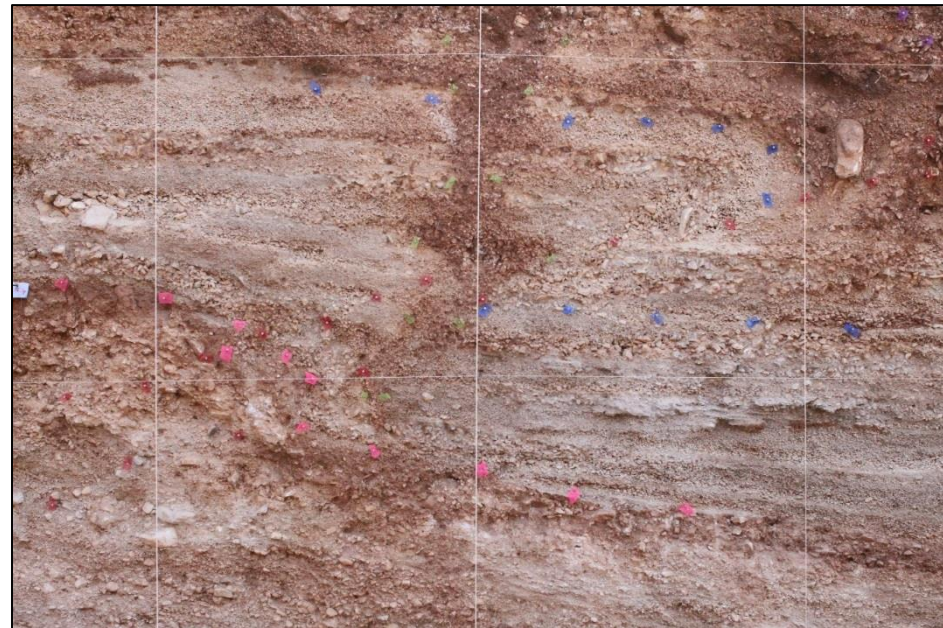
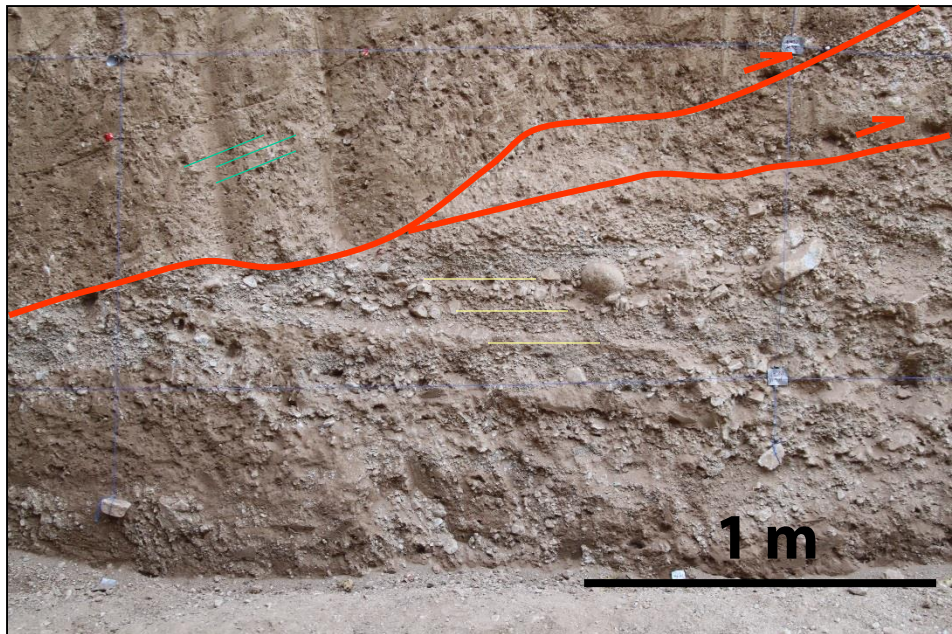
Govin, 2011

Déformations tectoniques





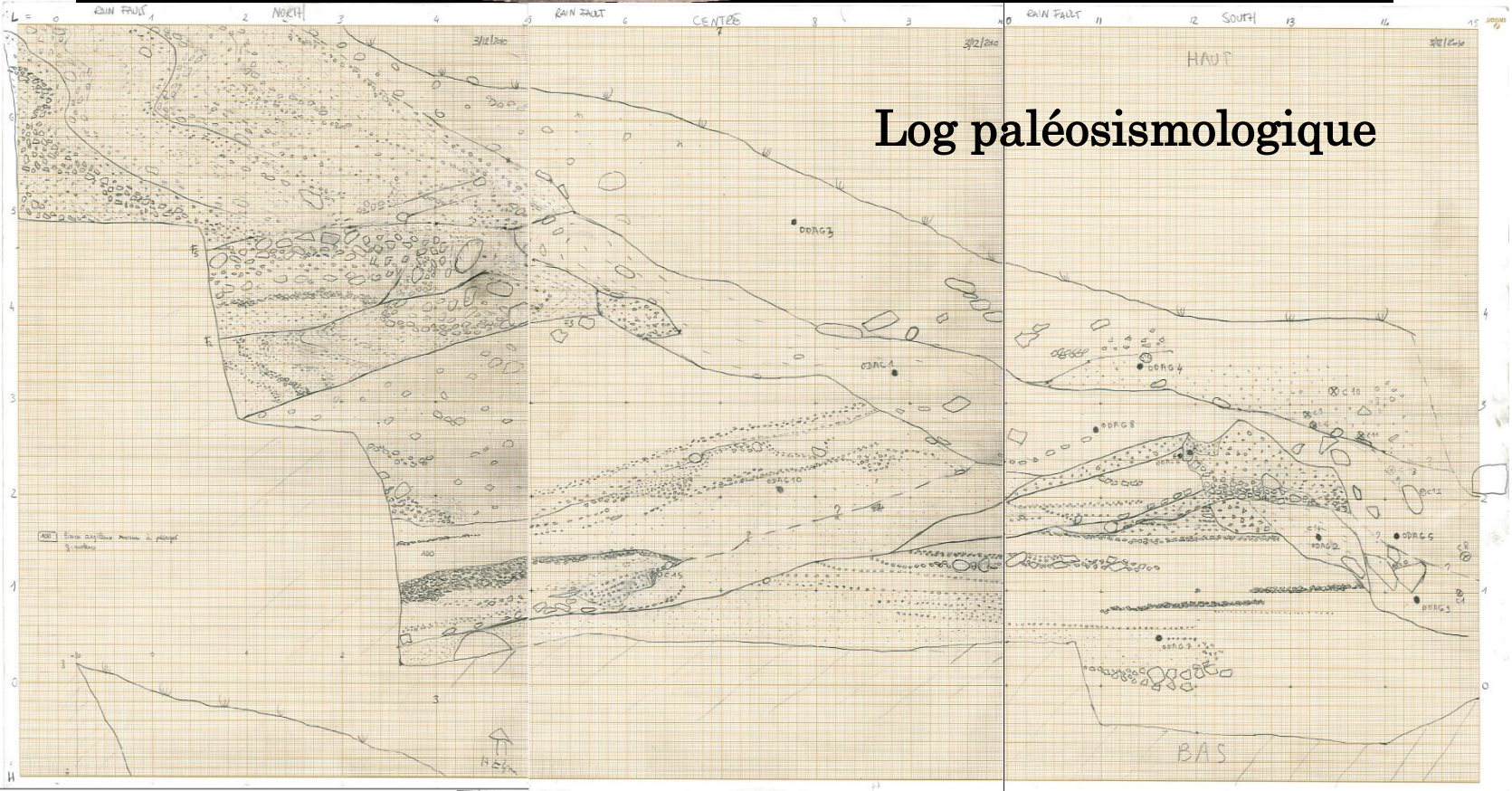




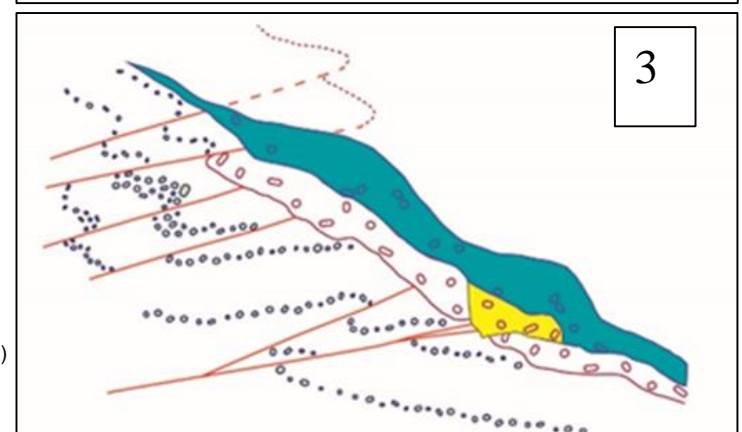
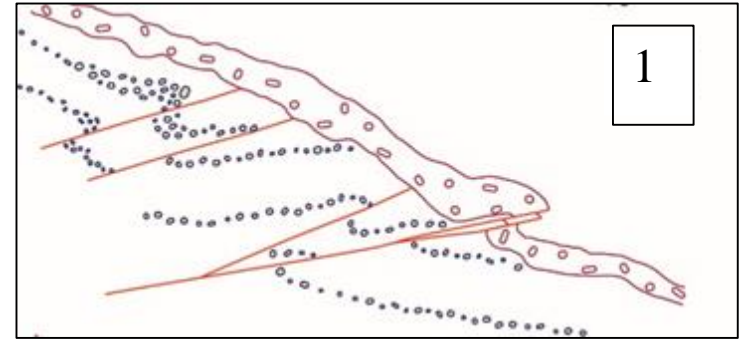
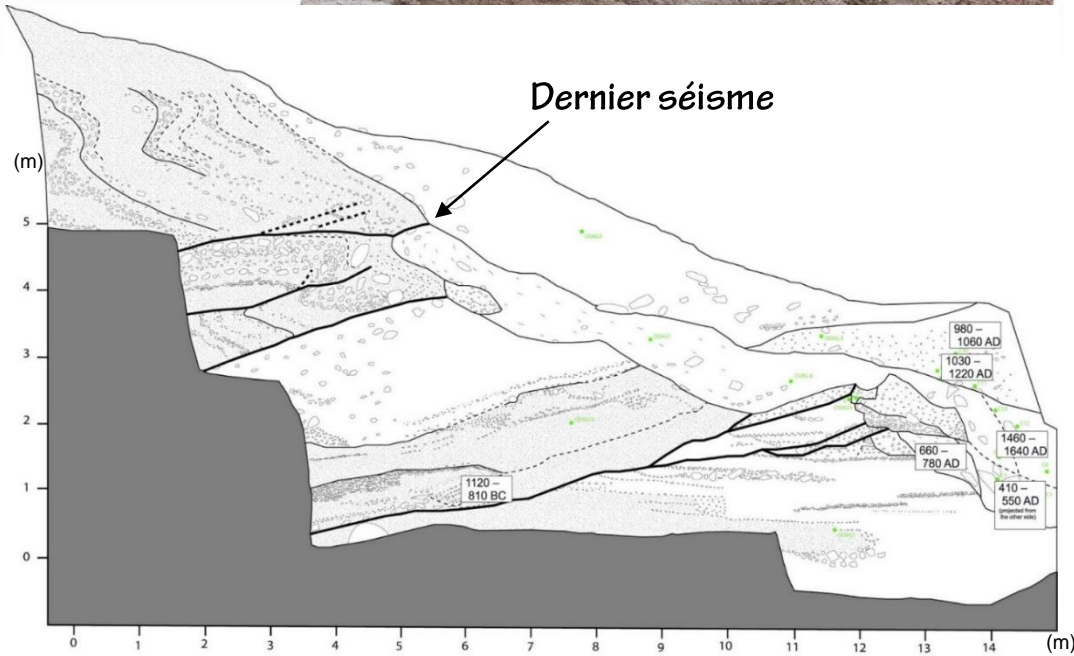


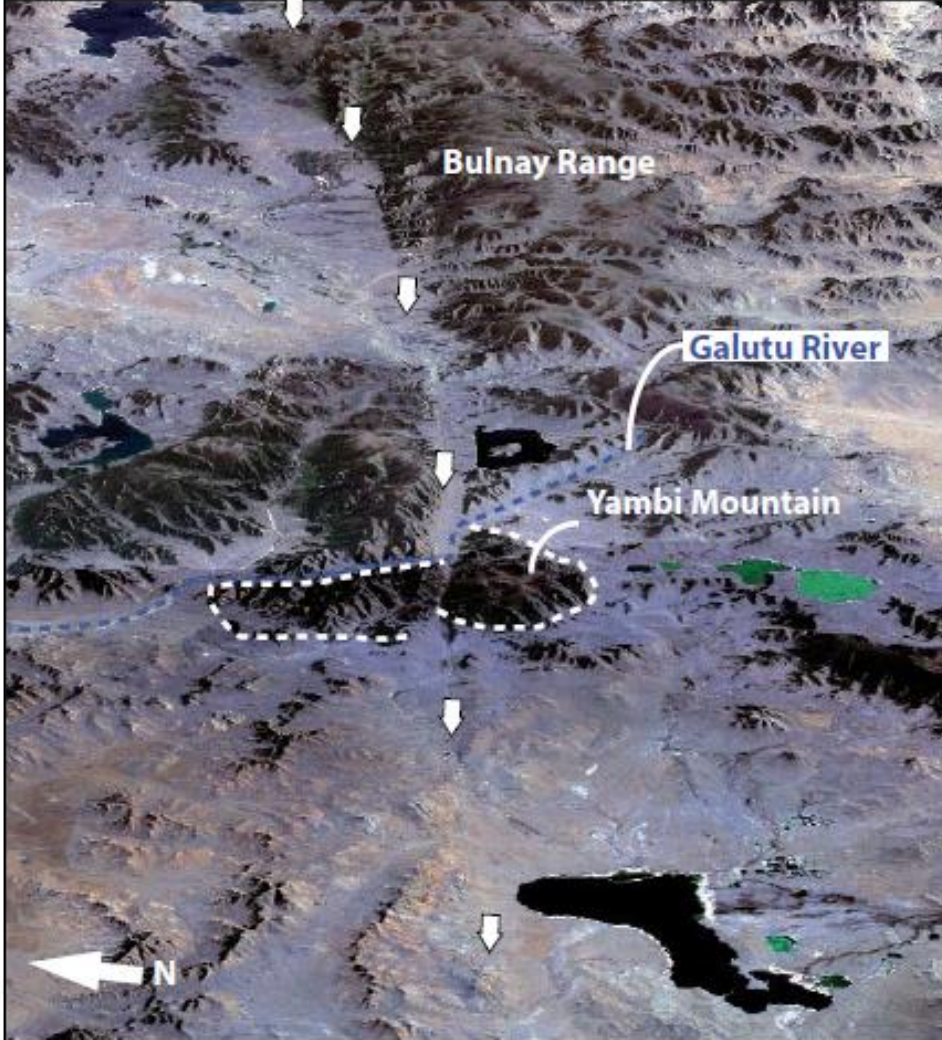
Paroi Est

Log paléosismologique

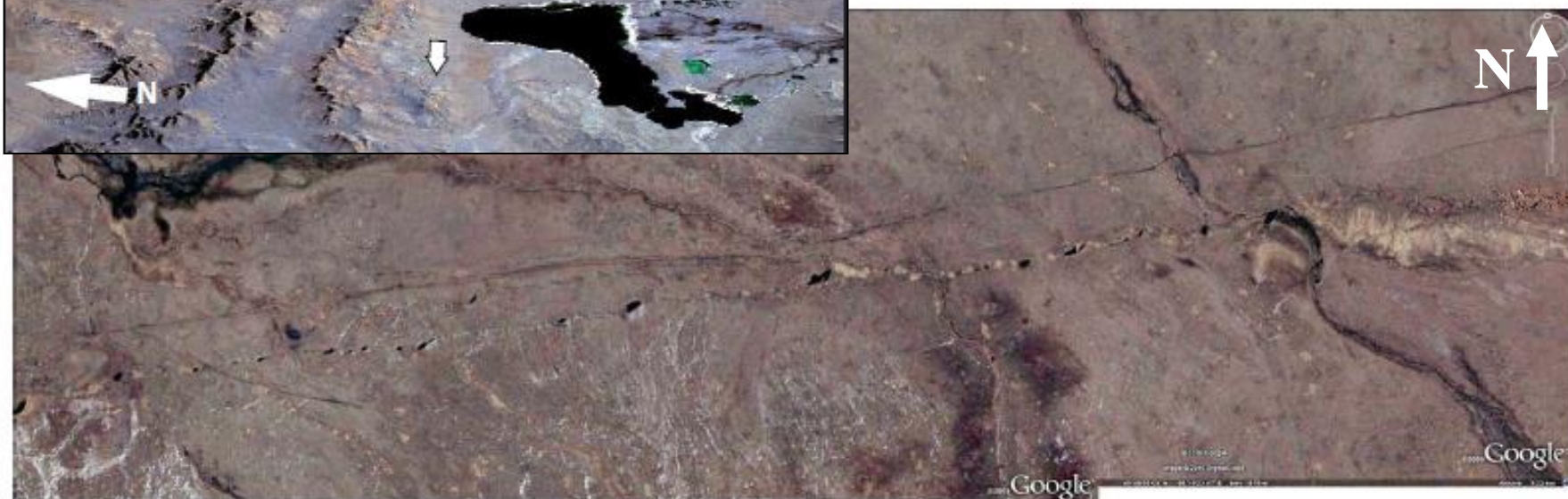


Reconstitution de l'histoire sismique de la faille





Rizza et al., 2015







Histoire sismique complète

=

Tranchées paléosismologiques



Enregistrement
continu dans les
sédiments lacustres