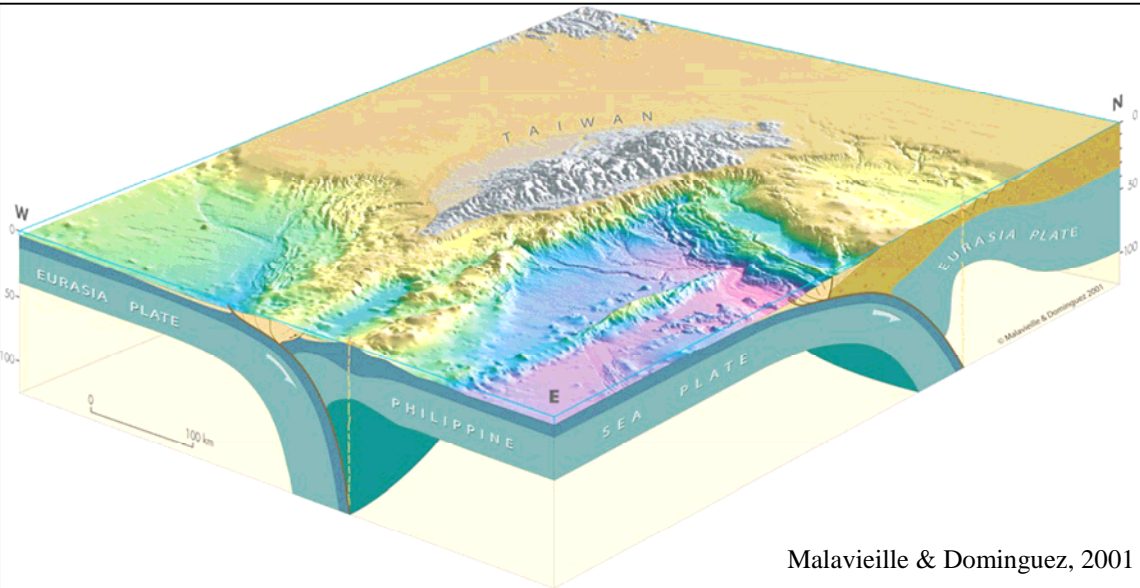
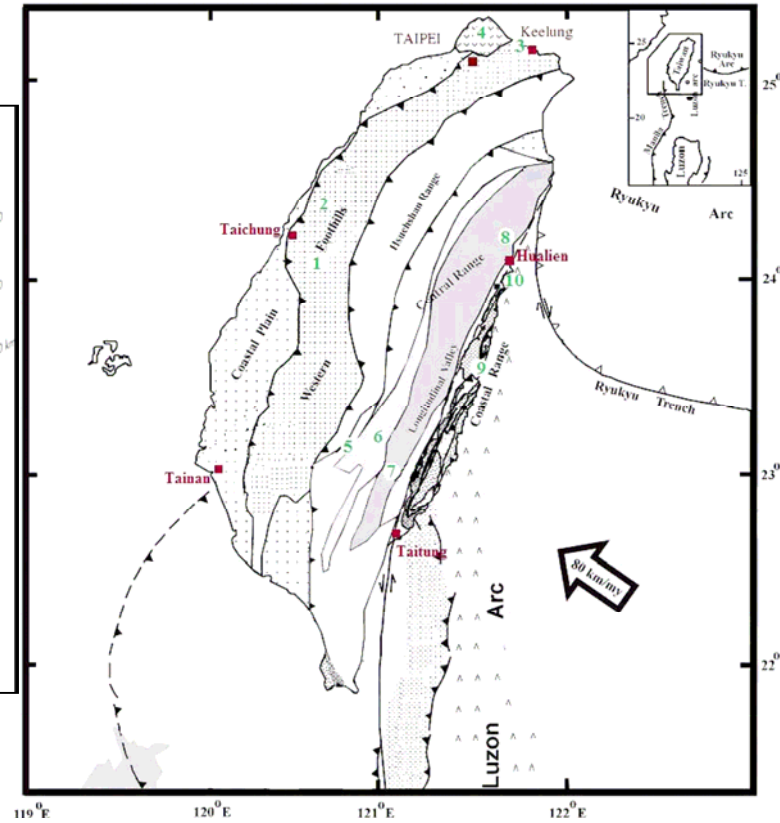


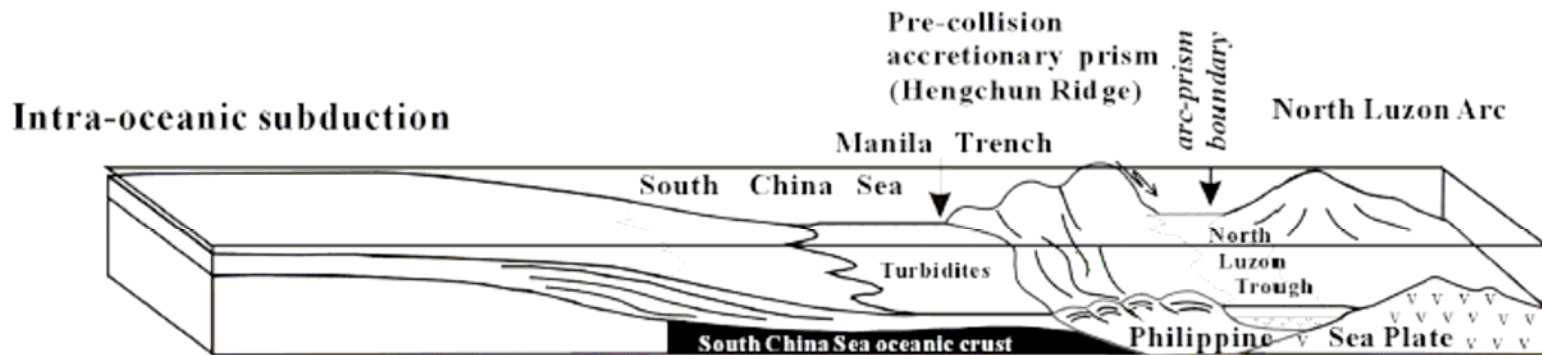
# Une collision très active : Taiwan



Malavieille & Dominguez, 2001



d'après Huang et al 2006





J. Malavieille

Massif des 99 pics

Hsue Shan range



J. Malavieille

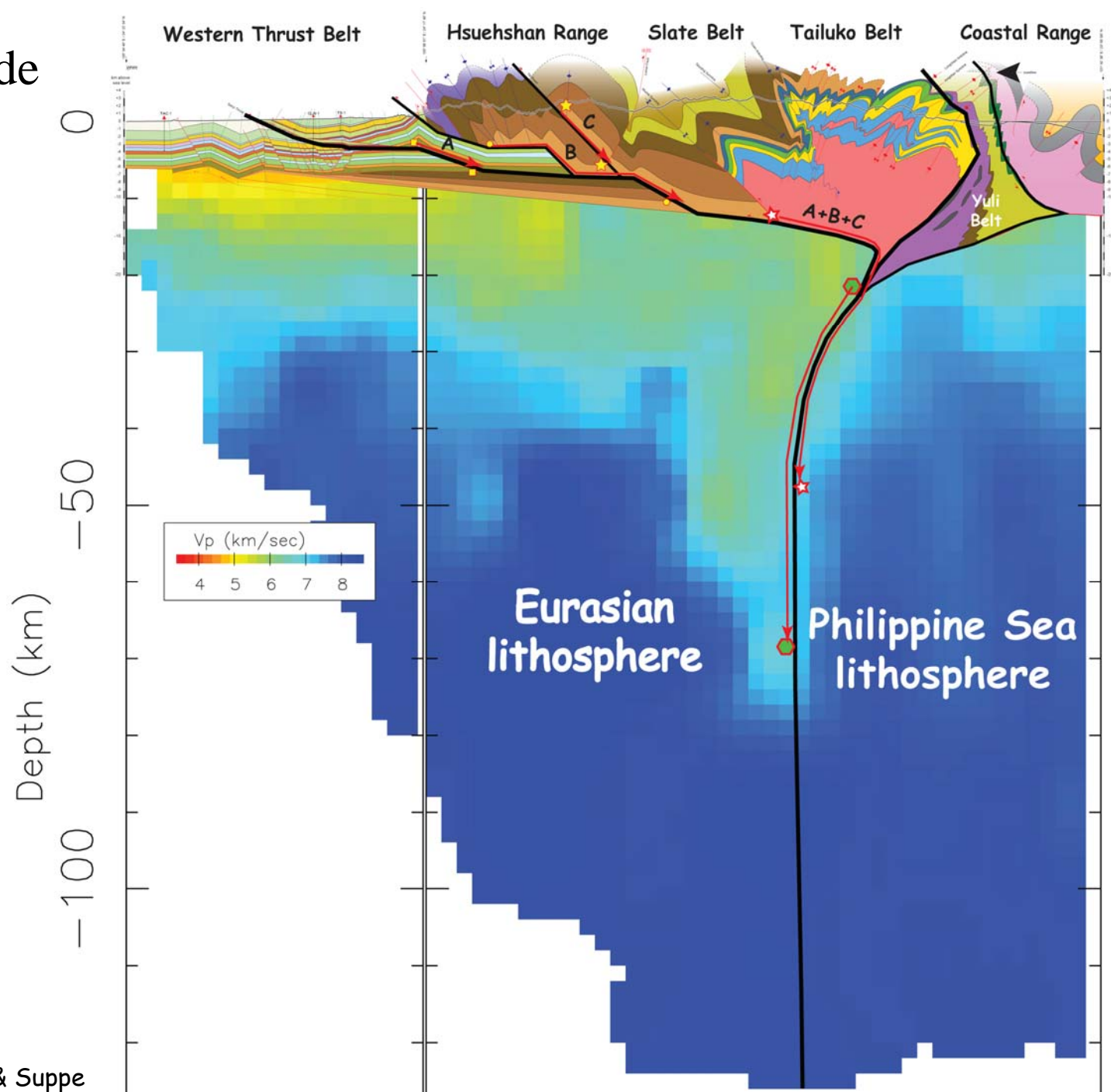


Lelie

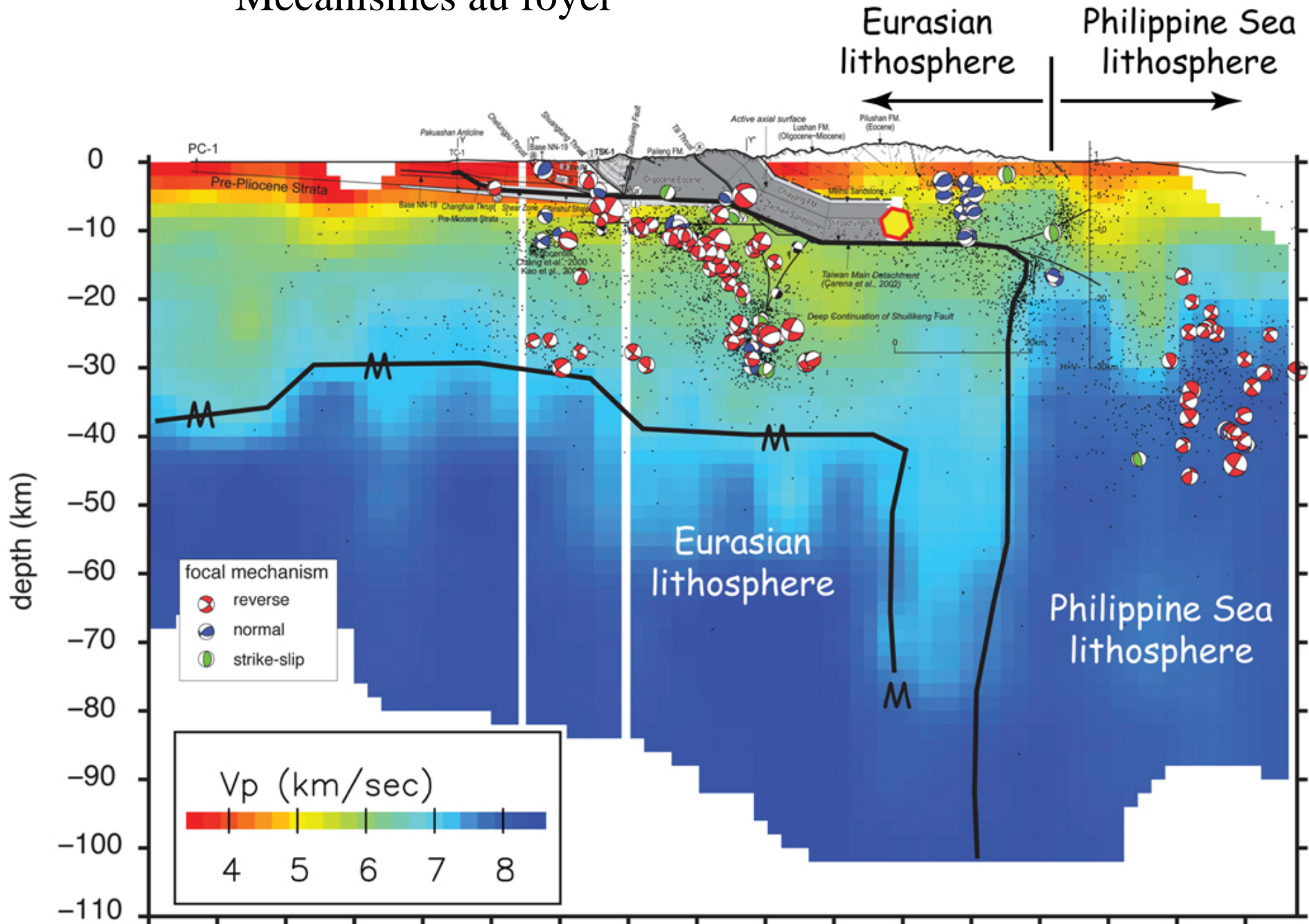
Taroko gorge



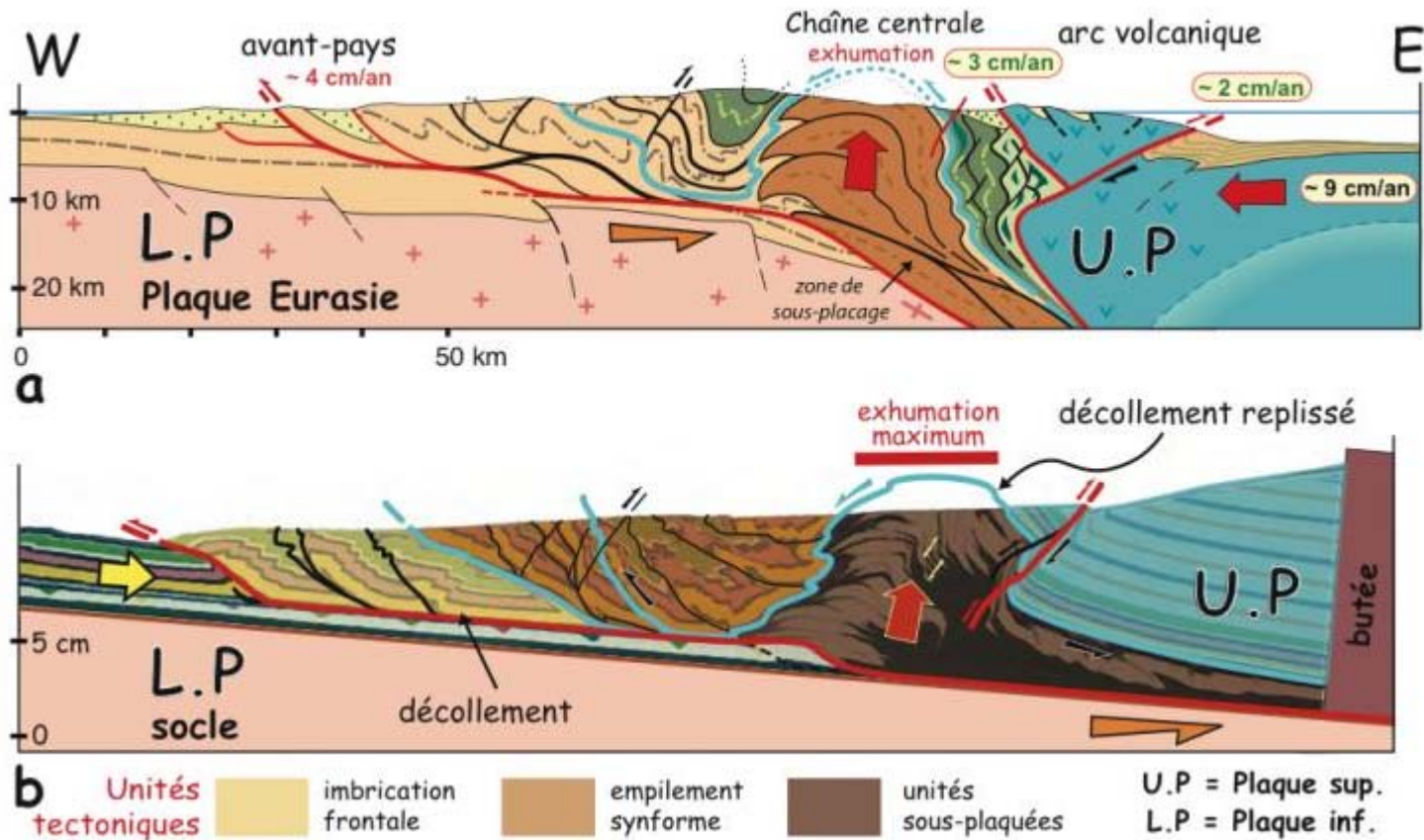
# Structure profonde



# Mécanismes au foyer



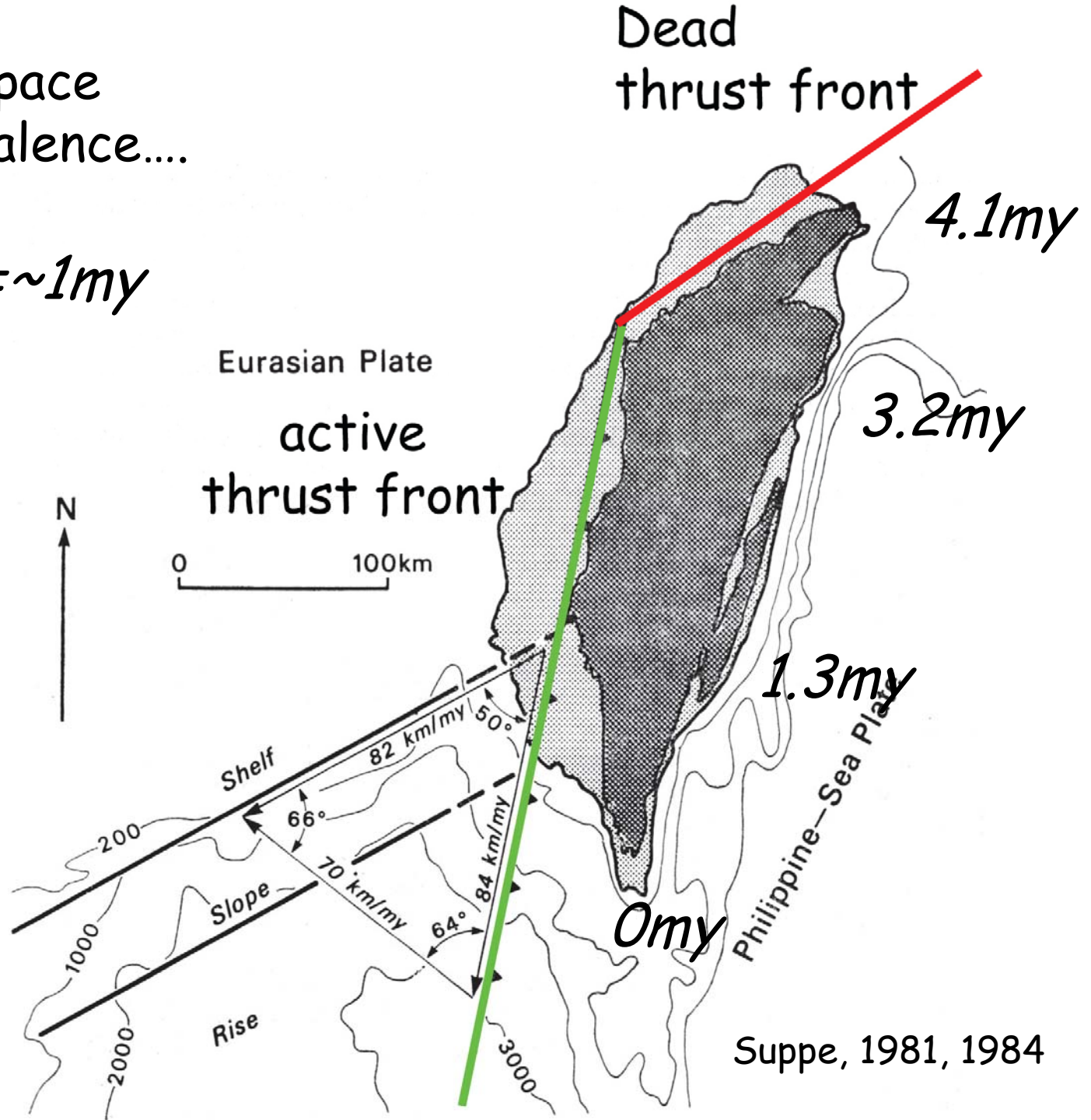
# Coupe géologique interprétative de Taiwan basée sur les modèles analogiques



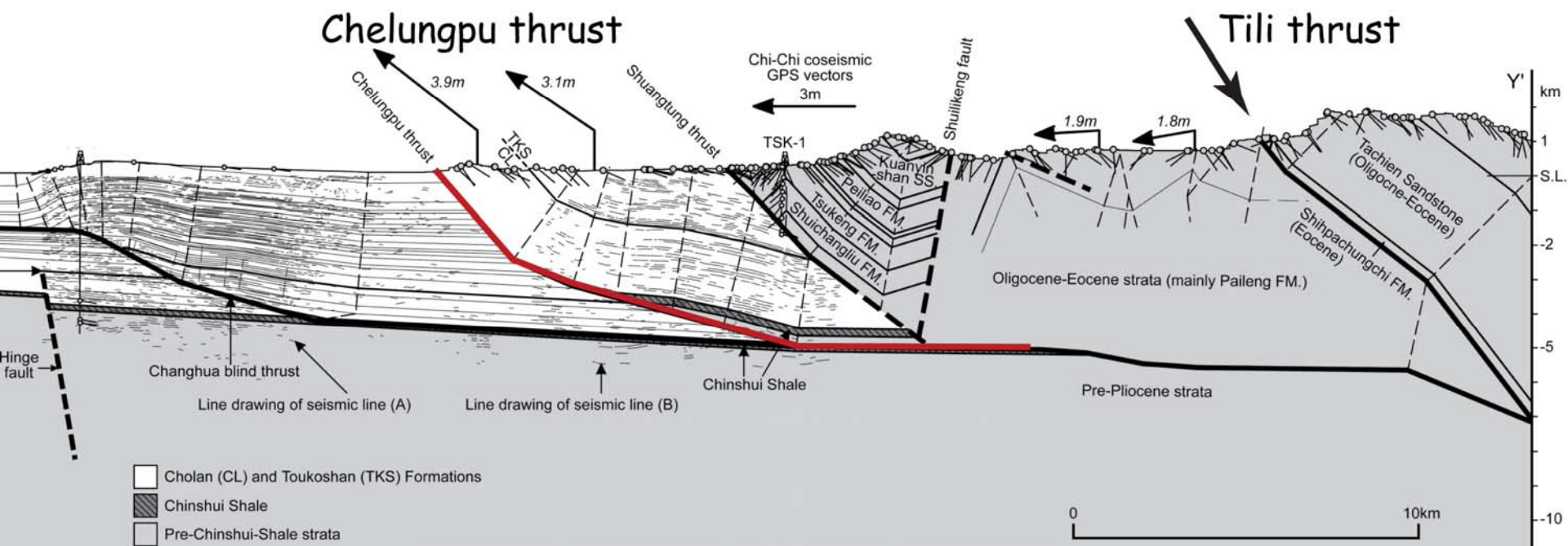
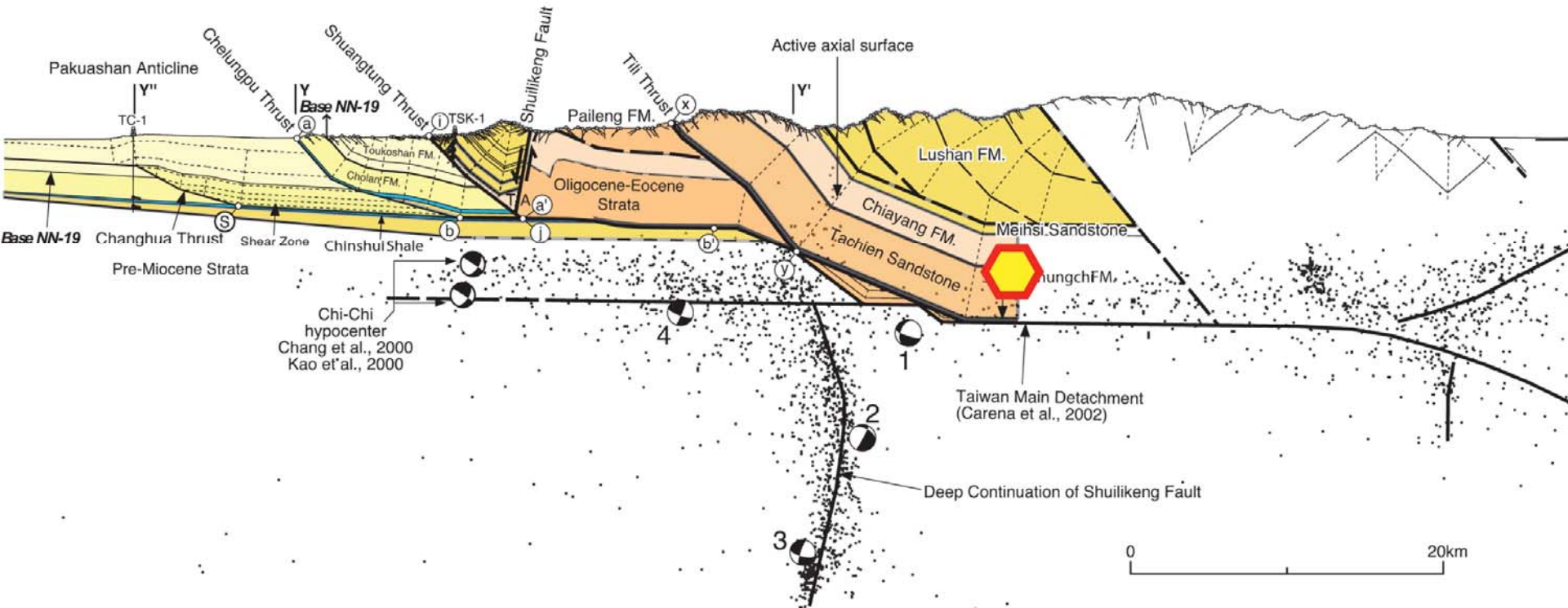


The time-space  
equivalence....

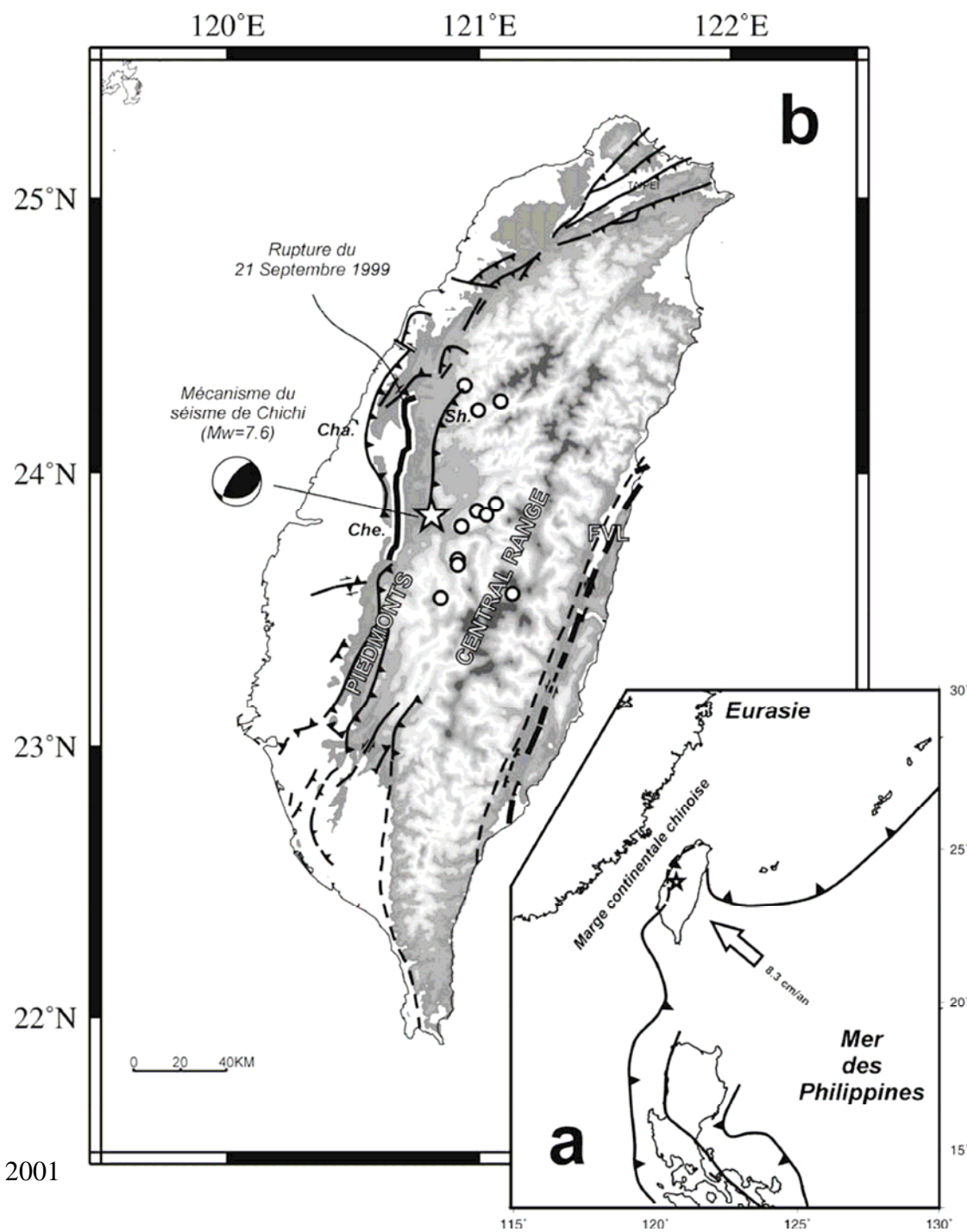
$$90\text{km} \approx 1\text{my}$$



Suppe, 1981, 1984



# Séisme de Chi chi, M 7,3 en 1999

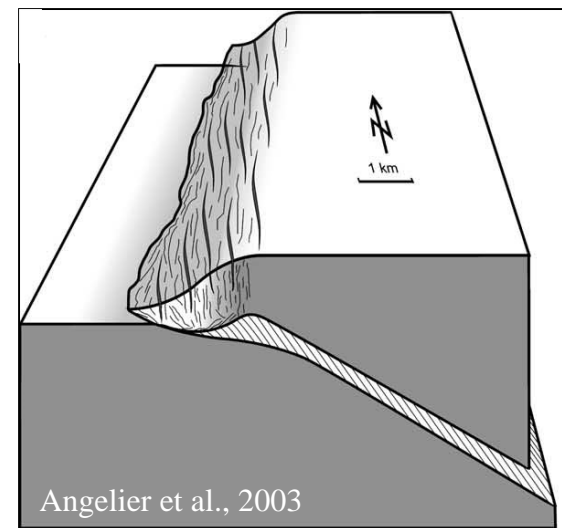


Mouthareau et al., 2001

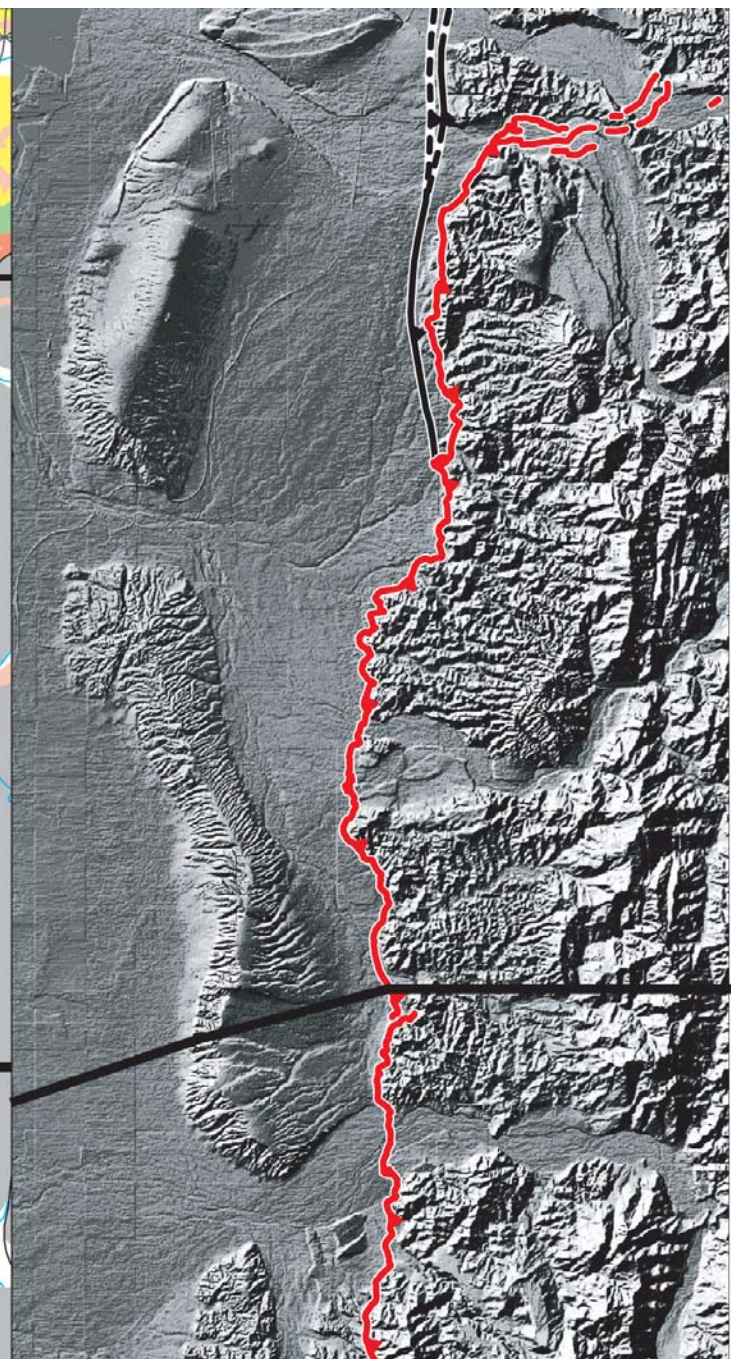
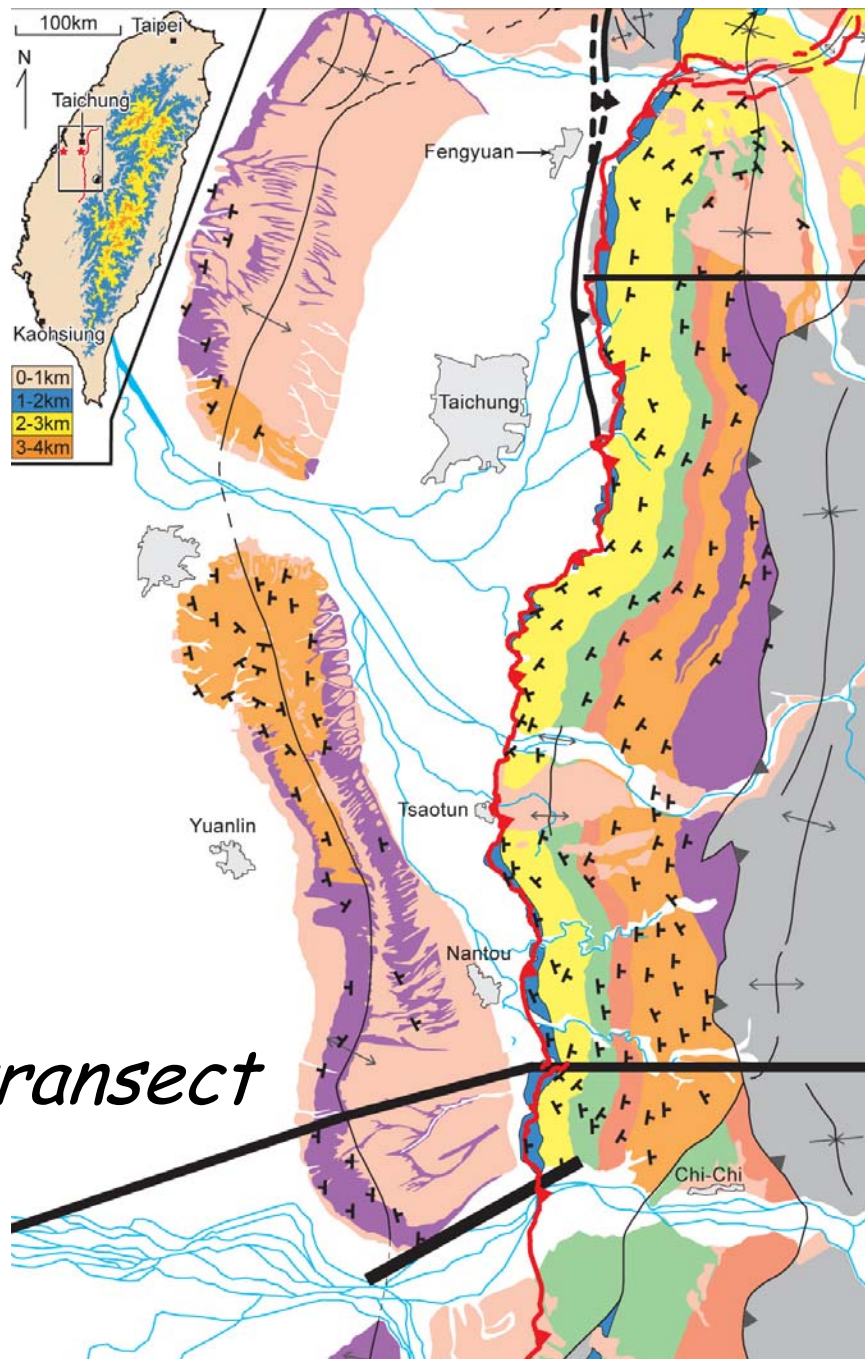




# Séisme de Chi chi, M 7,3 en 1999



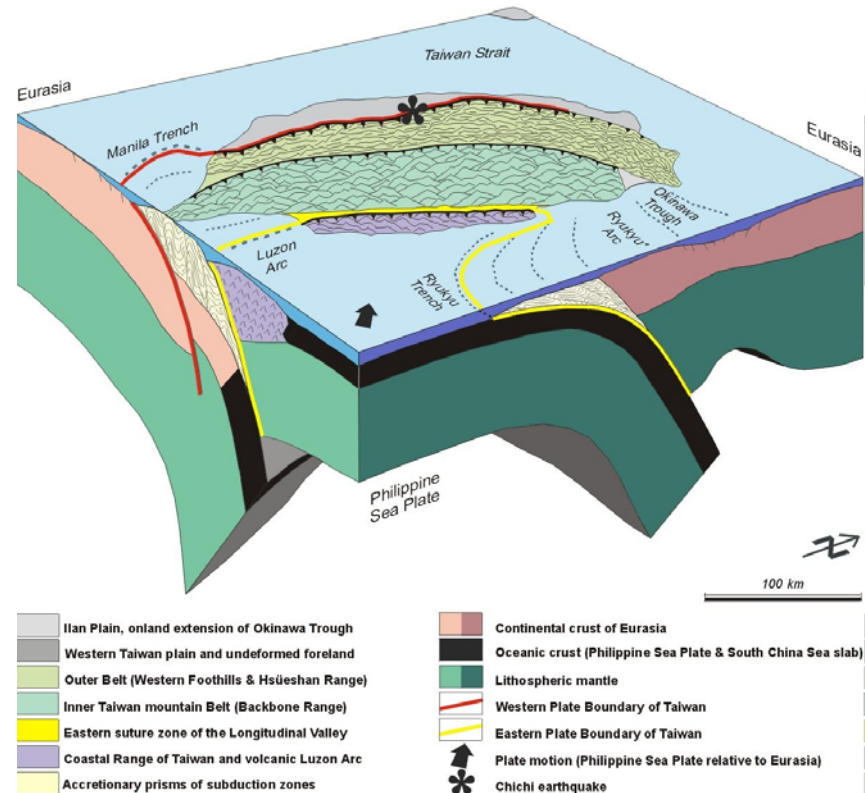
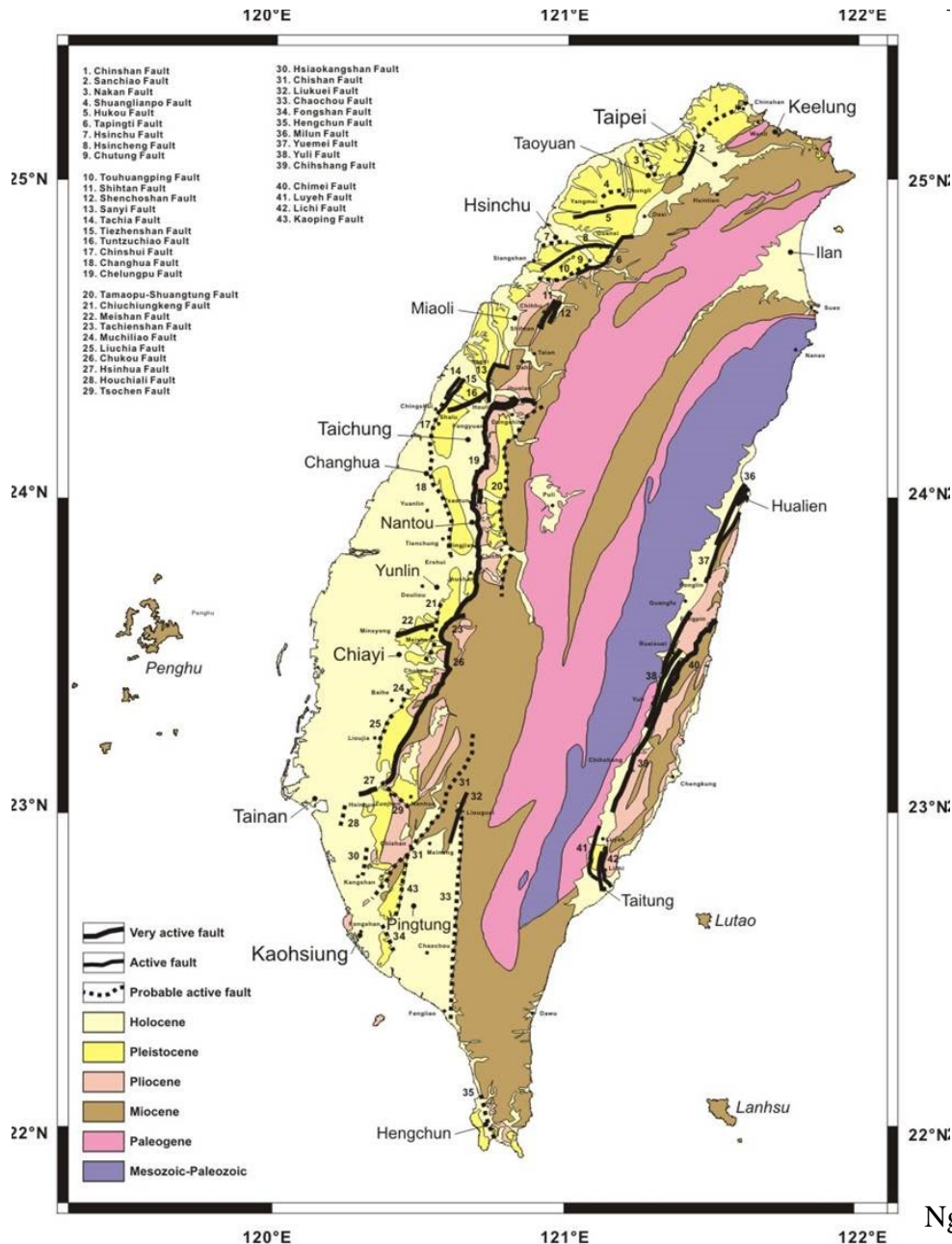




*Taiwan transect*



# Les failles actives à Taiwan



Angelier et al., 2001

Ng et al., 2009



# Erosion, incision, exhumation

